

## Product datasheet for **TA325569**

### Insulin Receptor (INSR) Rabbit Polyclonal Antibody

#### Product data:

Product Type:	Primary Antibodies
Applications:	WB
Recommended Dilution:	WB: 1:500-1:2000; IHC: 1:50-1:200
Reactivity:	Human, Mouse, Rat
Modifications:	Phospho-specific
Host:	Rabbit
Isotype:	IgG
Clonality:	Polyclonal
Immunogen:	The antiserum was produced against A synthesized peptide derived from human IR around the phosphorylation site of Tyrosine 1361
Formulation:	Rabbit IgG in phosphate buffered saline , pH 7.4, 150mM NaCl, 0.02% sodium azide and 50% glycerol.
Concentration:	lot specific
Purification:	The antibody was affinity-purified from rabbit antiserum by affinity-chromatography using epitope-specific peptide.
Conjugation:	Unconjugated
Storage:	Store at -20°C as received.
Stability:	Stable for 12 months from date of receipt.
Predicted Protein Size:	95 kDa
Gene Name:	insulin receptor
Database Link:	<a href="#">NP_000199</a> <a href="#">Entrez Gene 16337 Mouse</a> <a href="#">Entrez Gene 24954 Rat</a> <a href="#">Entrez Gene 3643 Human</a> <a href="#">P06213</a>
Background:	After removal of the precursor signal peptide, the insulin receptor precursor is post-translationally cleaved into two chains (alpha and beta) that are covalently linked. Binding of insulin to the insulin receptor (INSR) stimulates glucose uptake.
Synonyms:	CD220; HHF5

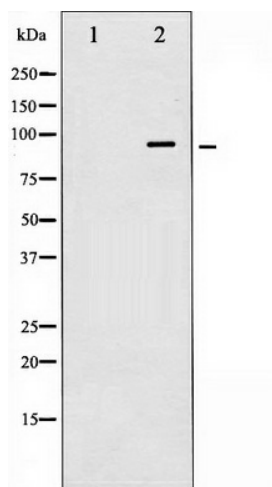


[View online »](#)

**Protein Families:** Druggable Genome, Protein Kinase, Transmembrane

**Protein Pathways:** Adherens junction, Insulin signaling pathway, Type II diabetes mellitus

**Product images:**



Western blot analysis of IR phosphorylation expression in Heatshock treated 293 whole cell lysates, The lane on the left is treated with the antigen-specific peptide.