

Product datasheet for **TA325566**

CD130 (IL6ST) Rabbit Polyclonal Antibody

Product data:

Product Type:	Primary Antibodies
Applications:	WB
Recommended Dilution:	WB: 1:500-1:2000
Reactivity:	Human, Mouse
Host:	Rabbit
Isotype:	IgG
Clonality:	Polyclonal
Immunogen:	The antiserum was produced against a synthesized A synthesized peptide derived from human CD130/gp130.
Formulation:	Rabbit IgG in phosphate buffered saline , pH 7.4, 150mM NaCl, 0.02% sodium azide and 50% glycerol.
Concentration:	lot specific
Purification:	The antibody was affinity-purified from rabbit antiserum by affinity-chromatography using epitope-specific peptide.
Conjugation:	Unconjugated
Storage:	Store at -20°C as received.
Stability:	Stable for 12 months from date of receipt.
Gene Name:	interleukin 6 signal transducer
Database Link:	NP_001177910 Entrez Gene 16195 Mouse Entrez Gene 3572 Human P40189
Background:	gp130 gp130 is a ubiquitously expressed type I cytokine family receptor. The receptor systems for IL6, LIF, OSM, CNTF, IL11 AND CT1 utilize gp130 for initiating signal transmission. Binds to IL6/IL6R (alpha chain) complex, resulting in the formation of high-affinity IL6 binding sites, and transduces the signal. Does not directly bind IL6. May have a role in embryonic development. Contains 5 fibronectin type III domains and 1 immunoglobulin-like C2-type domain. Two alternatively spliced isoforms have been described.
Synonyms:	CD130; CDW130; GP130; IL-6RB

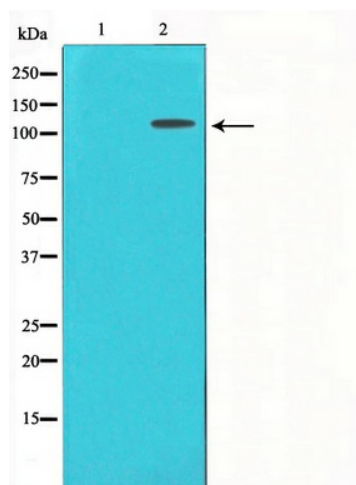


[View online »](#)

Protein Families: Druggable Genome, Secreted Protein, Transmembrane

Protein Pathways: Cytokine-cytokine receptor interaction, Jak-STAT signaling pathway

Product images:



Western blot analysis on Jurkat cell lysate using CD130/gp130 Antibody