

## Product datasheet for **TA325563**

### IL10RA Rabbit Polyclonal Antibody

#### Product data:

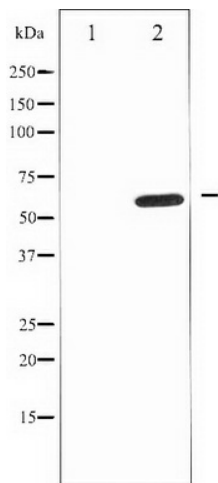
Product Type:	Primary Antibodies
Applications:	WB
Recommended Dilution:	WB: 1:500-1:2000; IF/ICC: 1:100-1:500
Reactivity:	Human
Host:	Rabbit
Isotype:	IgG
Clonality:	Polyclonal
Immunogen:	The antiserum was produced against A synthesized peptide derived from human IL-10R alpha
Formulation:	Rabbit IgG in phosphate buffered saline , pH 7.4, 150mM NaCl, 0.02% sodium azide and 50% glycerol.
Concentration:	lot specific
Purification:	The antibody was affinity-purified from rabbit antiserum by affinity-chromatography using epitope-specific peptide.
Conjugation:	Unconjugated
Storage:	Store at -20°C as received.
Stability:	Stable for 12 months from date of receipt.
Predicted Protein Size:	63 kDa
Gene Name:	interleukin 10 receptor subunit alpha
Database Link:	<a href="#">NP_001549</a> <a href="#">Entrez Gene 3587 Human</a> <a href="#">Q13651</a>
Background:	The protein encoded by this gene is a receptor for interleukin 10. This protein is structurally related to interferon receptors. It has been shown to mediate the immunosuppressive signal of interleukin 10, and thus inhibits the synthesis of proinflammatory cytokines.
Synonyms:	CD210; CD210a; CDW210A; HIL-10R; IL-10R1; IL10R
Protein Families:	Druggable Genome, Transmembrane



[View online »](#)

Protein Pathways: Cytokine-cytokine receptor interaction, Jak-STAT signaling pathway

### Product images:



Western blot analysis of IL-10R alpha expression in Na<sub>2</sub>VO<sub>3</sub> treated HepG2 whole cell lysates, The lane on the left is treated with the antigen-specific peptide.