

Product datasheet for **TA325556**

IKK beta (IKBKB) Rabbit Polyclonal Antibody

Product data:

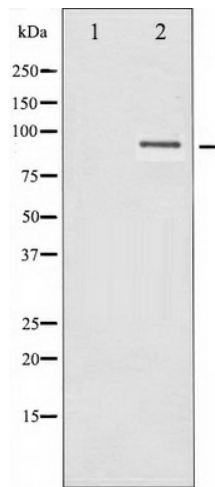
Product Type:	Primary Antibodies
Applications:	WB
Recommended Dilution:	WB: 1:500-1:2000; IHC: 1:50-1:200
Reactivity:	Human, Mouse, Rat
Host:	Rabbit
Isotype:	IgG
Clonality:	Polyclonal
Immunogen:	The antiserum was produced against A synthesized peptide derived from human IKK-beta
Formulation:	Rabbit IgG in phosphate buffered saline , pH 7.4, 150mM NaCl, 0.02% sodium azide and 50% glycerol.
Concentration:	lot specific
Purification:	The antibody was affinity-purified from rabbit antiserum by affinity-chromatography using epitope-specific peptide.
Conjugation:	Unconjugated
Storage:	Store at -20°C as received.
Stability:	Stable for 12 months from date of receipt.
Predicted Protein Size:	86 kDa
Gene Name:	inhibitor of kappa light polypeptide gene enhancer in B-cells, kinase beta
Database Link:	NP_001547 Entrez Gene 16150 Mouse Entrez Gene 84351 Rat Entrez Gene 3551 Human O14920
Background:	IKK-beta is a kinase of the IKK family. Phosphorylates inhibitors of NF-kappa-B thus leading to the dissociation of the inhibitor/NF-kappa-B complex and ultimately the degradation of the inhibitor. Preferentially found as a heterodimer with IKK-alpha but also as an homodimer.
Synonyms:	IKK-beta; IKK2; IKKB; IMD15; NFKB1KB
Protein Families:	Druggable Genome, Protein Kinase, Transcription Factors



[View online »](#)

Protein Pathways:

Acute myeloid leukemia, Adipocytokine signaling pathway, Apoptosis, B cell receptor signaling pathway, Chemokine signaling pathway, Chronic myeloid leukemia, Cytosolic DNA-sensing pathway, Epithelial cell signaling in Helicobacter pylori infection, Insulin signaling pathway, MAPK signaling pathway, Neurotrophin signaling pathway, NOD-like receptor signaling pathway, Pancreatic cancer, Pathways in cancer, Prostate cancer, RIG-I-like receptor signaling pathway, Small cell lung cancer, T cell receptor signaling pathway, Toll-like receptor signaling pathway, Type II diabetes mellitus

Product images:

Western blot analysis of IKK-beta expression in LPS treated 293 whole cell lysates, The lane on the left is treated with the antigen-specific peptide.