

Product datasheet for **TA325555**

IGFBP3 Rabbit Polyclonal Antibody

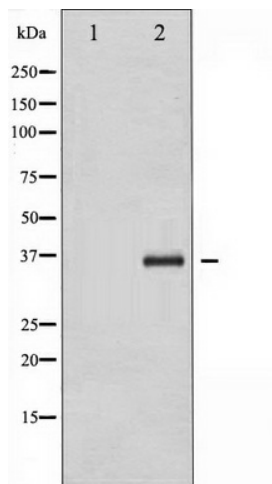
Product data:

Product Type:	Primary Antibodies
Applications:	WB
Recommended Dilution:	IHC: 1:50-1:200
Reactivity:	Human, Mouse
Modifications:	Phospho-specific
Host:	Rabbit
Isotype:	IgG
Clonality:	Polyclonal
Immunogen:	The antiserum was produced against A synthesized peptide derived from human IGFBP-3 around the phosphorylation site of Serine 183
Formulation:	Rabbit IgG in phosphate buffered saline , pH 7.4, 150mM NaCl, 0.02% sodium azide and 50% glycerol.
Concentration:	lot specific
Purification:	The antibody was affinity-purified from rabbit antiserum by affinity-chromatography using epitope-specific peptide.
Conjugation:	Unconjugated
Storage:	Store at -20°C as received.
Stability:	Stable for 12 months from date of receipt.
Predicted Protein Size:	kDa
Gene Name:	insulin like growth factor binding protein 3
Database Link:	NP_000589 Entrez Gene 16009 Mouse Entrez Gene 3486 Human P17936
Background:	This gene is a member of the insulin-like growth factor binding protein (IGFBP) family and encodes a protein with an IGFBP domain and a thyroglobulin type-I domain. The protein forms a ternary complex with insulin-like growth factor acid-labile subunit (IGFALS) and either insulin-like growth factor (IGF) I or II.



[View online »](#)

Synonyms: BP-53; IBP3
Protein Families: Druggable Genome, Secreted Protein
Protein Pathways: p53 signaling pathway

Product images:

Western blot analysis of IGFBP-3 phosphorylation expression in whole cell lysates, The lane on the left is treated with the antigen-specific peptide.