

Product datasheet for **TA325553**

IGF1 Receptor (IGF1R) Rabbit Polyclonal Antibody

Product data:

| | |
|-------------------------|--|
| Product Type: | Primary Antibodies |
| Applications: | WB |
| Recommended Dilution: | WB: 1:500-1:2000 |
| Reactivity: | Human, Mouse, Rat |
| Modifications: | Phospho-specific |
| Host: | Rabbit |
| Isotype: | IgG |
| Clonality: | Polyclonal |
| Immunogen: | The antiserum was produced against A synthesized peptide derived from human IGF1R around the phosphorylation site of Tyrosine 1165/Tyrosine 1166 |
| Formulation: | Rabbit IgG in phosphate buffered saline , pH 7.4, 150mM NaCl, 0.02% sodium azide and 50% glycerol. |
| Concentration: | lot specific |
| Purification: | The antibody was affinity-purified from rabbit antiserum by affinity-chromatography using epitope-specific peptide. |
| Conjugation: | Unconjugated |
| Storage: | Store at -20°C as received. |
| Stability: | Stable for 12 months from date of receipt. |
| Predicted Protein Size: | 90,155 kDa |
| Gene Name: | insulin like growth factor 1 receptor |
| Database Link: | NP_000866 Entrez Gene 16001 Mouse Entrez Gene 25718 Rat Entrez Gene 3480 Human P08069 |
| Background: | This receptor binds insulin-like growth factor with a high affinity. It has tyrosine kinase activity. The insulin-like growth factor I receptor plays a critical role in transformation events. Cleavage of the precursor generates alpha and beta subunits. |
| Synonyms: | CD221; IGFIR; IGFR; JTK13 |

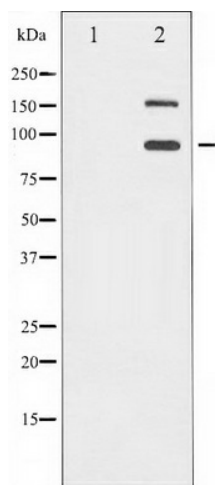


[View online »](#)

Protein Families: Druggable Genome, Protein Kinase, Transmembrane

Protein Pathways: Adherens junction, Colorectal cancer, Endocytosis, Focal adhesion, Glioma, Long-term depression, Melanoma, Oocyte meiosis, Pathways in cancer, Progesterone-mediated oocyte maturation, Prostate cancer

Product images:



Western blot analysis of IGF1R phosphorylation expression in Insulin treated 293 whole cell lysates, The lane on the left is treated with the antigen-specific peptide.