

## Product datasheet for **TA325552**

### IGF1 Receptor (IGF1R) Rabbit Polyclonal Antibody

#### Product data:

Product Type:	Primary Antibodies
Applications:	WB
Recommended Dilution:	WB: 1:500-1:2000; IHC: 1:50-1:200; IP
Reactivity:	Human, Mouse, Rat
Modifications:	Phospho-specific
Host:	Rabbit
Isotype:	IgG
Clonality:	Polyclonal
Immunogen:	The antiserum was produced against A synthesized peptide derived from human IGF1R around the phosphorylation site of Tyrosine 1161
Formulation:	Rabbit IgG in phosphate buffered saline , pH 7.4, 150mM NaCl, 0.02% sodium azide and 50% glycerol.
Concentration:	lot specific
Purification:	The antibody was affinity-purified from rabbit antiserum by affinity-chromatography using epitope-specific peptide.
Conjugation:	Unconjugated
Storage:	Store at -20°C as received.
Stability:	Stable for 12 months from date of receipt.
Predicted Protein Size:	90,155 kDa
Gene Name:	insulin like growth factor 1 receptor
Database Link:	<a href="#">NP_000866</a> <a href="#">Entrez Gene 16001 Mouse</a> <a href="#">Entrez Gene 25718 Rat</a> <a href="#">Entrez Gene 3480 Human</a> <a href="#">P08069</a>
Background:	InsR a receptor tyrosine kinase that binds insulin and key mediator of the metabolic effects of insulin. Binding to insulin stimulates association of the receptor with downstream mediators including IRS1 and phosphatidylinositol 3'-kinase (PI3K).
Synonyms:	CD221; IGFIR; IGFR; JTK13

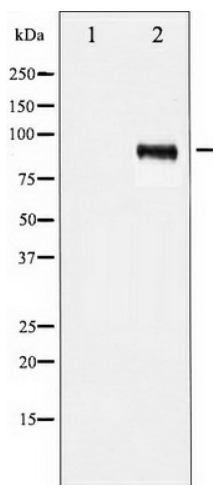


[View online »](#)

**Protein Families:** Druggable Genome, Protein Kinase, Transmembrane

**Protein Pathways:** Adherens junction, Colorectal cancer, Endocytosis, Focal adhesion, Glioma, Long-term depression, Melanoma, Oocyte meiosis, Pathways in cancer, Progesterone-mediated oocyte maturation, Prostate cancer

**Product images:**



Western blot analysis of IGF1R phosphorylation expression in Insulin treated 293 whole cell lysates, The lane on the left is treated with the antigen-specific peptide.