

## Product datasheet for **TA325551**

### IGF1 Receptor (IGF1R) Rabbit Polyclonal Antibody

#### Product data:

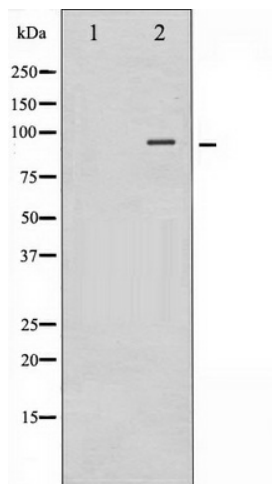
Product Type:	Primary Antibodies
Applications:	WB
Recommended Dilution:	WB: 1:500-1:2000; IHC: 1:50-1:200
Reactivity:	Human, Mouse, Rat
Host:	Rabbit
Isotype:	IgG
Clonality:	Polyclonal
Immunogen:	The antiserum was produced against A synthesized peptide derived from human IGF1R
Formulation:	Rabbit IgG in phosphate buffered saline , pH 7.4, 150mM NaCl, 0.02% sodium azide and 50% glycerol.
Concentration:	lot specific
Purification:	The antibody was affinity-purified from rabbit antiserum by affinity-chromatography using epitope-specific peptide.
Conjugation:	Unconjugated
Storage:	Store at -20°C as received.
Stability:	Stable for 12 months from date of receipt.
Predicted Protein Size:	90,155 kDa
Gene Name:	insulin like growth factor 1 receptor
Database Link:	<a href="#">NP_000866</a> <a href="#">Entrez Gene 16001 Mouse</a> <a href="#">Entrez Gene 25718 Rat</a> <a href="#">Entrez Gene 3480 Human</a> <a href="#">P08069</a>
Background:	Insulin-like growth factor I, or IGF-I, is an ubiquitous peptide that acts in both an autocrine and paracrine fashion to stimulate the growth of vascular smooth muscle cells. In addition, IGF-I regulates renal function, growth and repair, is critically involved in bone formation and resorption and has been implicated in mediating aspects of the immune response.
Synonyms:	CD221; IGFIR; IGFR; JTK13
Protein Families:	Druggable Genome, Protein Kinase, Transmembrane



[View online »](#)

**Protein Pathways:**

Adherens junction, Colorectal cancer, Endocytosis, Focal adhesion, Glioma, Long-term depression, Melanoma, Oocyte meiosis, Pathways in cancer, Progesterone-mediated oocyte maturation, Prostate cancer

**Product images:**

Western blot analysis of IGF1R expression in Insulin treated 293 whole cell lysates, The lane on the left is treated with the antigen-specific peptide.