

Product datasheet for **TA325546**

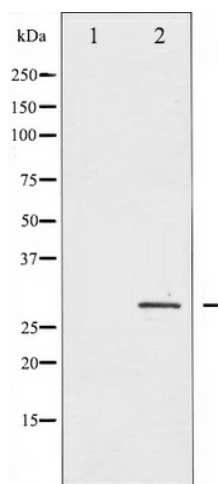
HSP27 (HSPB1) Rabbit Polyclonal Antibody

Product data:

Product Type:	Primary Antibodies
Applications:	WB
Recommended Dilution:	WB: 1:500-1:2000
Reactivity:	Human, Mouse, Rat
Modifications:	Phospho-specific
Host:	Rabbit
Isotype:	IgG
Clonality:	Polyclonal
Immunogen:	The antiserum was produced against A synthesized peptide derived from human HSP27 around the phosphorylation site of Serine 82
Formulation:	Rabbit IgG in phosphate buffered saline , pH 7.4, 150mM NaCl, 0.02% sodium azide and 50% glycerol.
Concentration:	lot specific
Purification:	The antibody was affinity-purified from rabbit antiserum by affinity-chromatography using epitope-specific peptide.
Conjugation:	Unconjugated
Storage:	Store at -20°C as received.
Stability:	Stable for 12 months from date of receipt.
Predicted Protein Size:	27 kDa
Gene Name:	heat shock protein family B (small) member 1
Database Link:	NP_001531 Entrez Gene 15507 MouseEntrez Gene 24471 RatEntrez Gene 3315 Human P04792
Background:	HSP27 is a small heat shock protein that is regulated both transcriptionally and posttranslationally. Modulates actin polymerization and reorganization.
Synonyms:	CMT2F; HEL-S-102; HMN2B; HS.76067; Hsp25; HSP27; HSP28; SRP27
Protein Pathways:	MAPK signaling pathway, VEGF signaling pathway



[View online »](#)

Product images:

Western blot analysis of HSP27 phosphorylation expression in Ca²⁺ treated HeLa whole cell lysates, The lane on the left is treated with the antigen-specific peptide.