

Product datasheet for **TA325543**

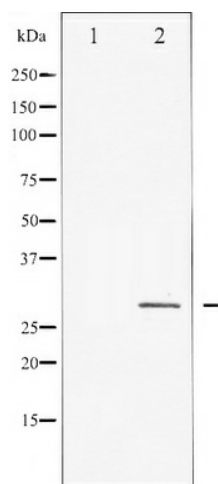
HSP27 (HSPB1) Rabbit Polyclonal Antibody

Product data:

| | |
|-------------------------|---|
| Product Type: | Primary Antibodies |
| Applications: | WB |
| Recommended Dilution: | WB: 1:500-1:2000; IHC: 1:50-1:200 |
| Reactivity: | Human, Mouse, Rat |
| Host: | Rabbit |
| Isotype: | IgG |
| Clonality: | Polyclonal |
| Immunogen: | The antiserum was produced against A synthesized peptide derived from human HSP27 |
| Formulation: | Rabbit IgG in phosphate buffered saline , pH 7.4, 150mM NaCl, 0.02% sodium azide and 50% glycerol. |
| Concentration: | lot specific |
| Purification: | The antibody was affinity-purified from rabbit antiserum by affinity-chromatography using epitope-specific peptide. |
| Conjugation: | Unconjugated |
| Storage: | Store at -20°C as received. |
| Stability: | Stable for 12 months from date of receipt. |
| Predicted Protein Size: | 27 kDa |
| Gene Name: | heat shock protein family B (small) member 1 |
| Database Link: | NP_001531 Entrez Gene 15507 Mouse Entrez Gene 24471 Rat Entrez Gene 3315 Human P04792 |
| Background: | HSP27 is a small heat shock protein that is regulated both transcriptionally and posttranslationally. Modulates actin polymerization and reorganization. |
| Synonyms: | CMT2F; HEL-S-102; HMN2B; HS.76067; Hsp25; HSP27; HSP28; SRP27 |
| Protein Pathways: | MAPK signaling pathway, VEGF signaling pathway |



[View online »](#)

Product images:

Western blot analysis of HSP27 expression in Ca²⁺ treated HeLa whole cell lysates, The lane on the left is treated with the antigen-specific peptide.