

## Product datasheet for **TA325534**

### H4-16 Rabbit Polyclonal Antibody

#### Product data:

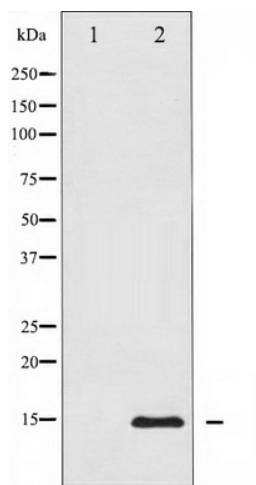
Product Type:	Primary Antibodies
Applications:	WB
Recommended Dilution:	WB: 1:500-1:2000; IHC: 1:50-1:200; IF/ICC: 1:100-1:500
Reactivity:	Human, Mouse, Rat
Host:	Rabbit
Isotype:	IgG
Clonality:	Polyclonal
Immunogen:	The antiserum was produced against A synthesized peptide derived from human Acetyl-Histone H4 around the phosphorylation site of Lys5
Formulation:	Rabbit IgG in phosphate buffered saline , pH 7.4, 150mM NaCl, 0.02% sodium azide and 50% glycerol.
Concentration:	lot specific
Purification:	The antibody was affinity-purified from rabbit antiserum by affinity-chromatography using epitope-specific peptide.
Conjugation:	Unconjugated
Storage:	Store at -20°C as received.
Stability:	Stable for 12 months from date of receipt.
Predicted Protein Size:	11 kDa
Gene Name:	histone cluster 4, H4
Database Link:	<a href="#">NP_778224</a> <a href="#">Entrez Gene 320332 Mouse</a> <a href="#">Entrez Gene 680097 Rat</a> <a href="#">Entrez Gene 121504 Human</a> <a href="#">P62805</a>
Background:	Histones are basic nuclear proteins that are responsible for the nucleosome structure of the chromosomal fiber in eukaryotes. Two molecules of each of the four core histones (H2A, H2B, H3, and H4) form an octamer, around which approximately 146 bp of DNA is wrapped in repeating units, called nucleosomes.
Synonyms:	H4; p



[View online »](#)

Protein Pathways: Systemic lupus erythematosus

**Product images:**



Western blot analysis of Acetyl-Histone H4 phosphorylation expression in TSA treated COS7 whole cell lysates, The lane on the left is treated with the antigen-specific peptide.