

Product datasheet for **TA325531**

H3FJ (HIST1H3J) Rabbit Polyclonal Antibody

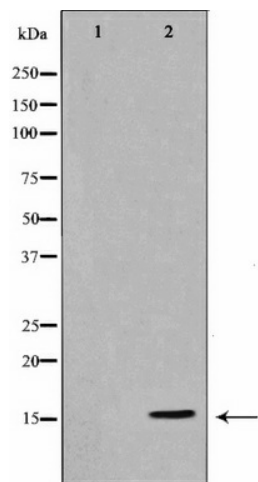
Product data:

| | |
|-------------------------|---|
| Product Type: | Primary Antibodies |
| Applications: | WB |
| Recommended Dilution: | WB: 1:500-1:2000; IHC: 1:50-1:200 |
| Reactivity: | Human, Mouse, Rat |
| Host: | Rabbit |
| Isotype: | IgG |
| Clonality: | Polyclonal |
| Immunogen: | The antiserum was produced against A synthesized peptide derived from human Histone H3 |
| Formulation: | Rabbit IgG in phosphate buffered saline , pH 7.4, 150mM NaCl, 0.02% sodium azide and 50% glycerol. |
| Concentration: | lot specific |
| Purification: | The antibody was affinity-purified from rabbit antiserum by affinity-chromatography using epitope-specific peptide. |
| Conjugation: | Unconjugated |
| Storage: | Store at -20°C as received. |
| Stability: | Stable for 12 months from date of receipt. |
| Predicted Protein Size: | 17 kDa |
| Gene Name: | histone cluster 1, H3j |
| Database Link: | NP_003526 Entrez Gene 8356 Human P68431 |
| Background: | H3F3A Variant histone H3 which replaces conventional H3 in a wide range of nucleosomes in active genes. Constitutes the predominant form of histone H3 in non-dividing cells and is incorporated into chromatin independently of DNA synthesis. |
| Synonyms: | H3; H3Fj; j |
| Protein Pathways: | Systemic lupus erythematosus |



[View online »](#)

Product images:



Western blot analysis of Histone H3 expression in TSA treated RAW264.7 whole cell lysates, The lane on the left is treated with the antigen-specific peptide.