

Product datasheet for **TA325530**

H3FJ (HIST1H3J) Rabbit Polyclonal Antibody

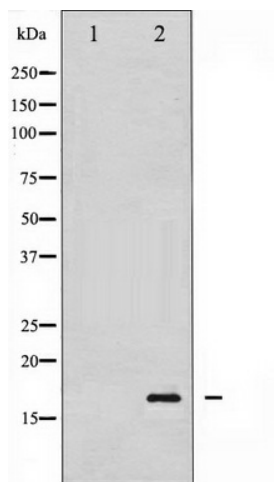
Product data:

Product Type:	Primary Antibodies
Applications:	WB
Recommended Dilution:	WB: 1:500-1:2000; IHC: 1:50-1:200; IF/ICC: 1:100-1:500
Reactivity:	Human, Mouse, Rat
Host:	Rabbit
Isotype:	IgG
Clonality:	Polyclonal
Immunogen:	The antiserum was produced against A synthesized peptide derived from human Acetyl-Histone H3 around the phosphorylation site of Lys9
Formulation:	Rabbit IgG in phosphate buffered saline , pH 7.4, 150mM NaCl, 0.02% sodium azide and 50% glycerol.
Concentration:	lot specific
Purification:	The antibody was affinity-purified from rabbit antiserum by affinity-chromatography using epitope-specific peptide.
Conjugation:	Unconjugated
Storage:	Store at -20°C as received.
Stability:	Stable for 12 months from date of receipt.
Predicted Protein Size:	17 kDa
Gene Name:	histone cluster 1, H3j
Database Link:	NP_003526 Entrez Gene 8356 Human P68431
Background:	H3F3A Variant histone H3 which replaces conventional H3 in a wide range of nucleosomes in active genes. Constitutes the predominant form of histone H3 in non-dividing cells and is incorporated into chromatin independently of DNA synthesis.
Synonyms:	H3; H3FJ; j
Protein Pathways:	Systemic lupus erythematosus



[View online »](#)

Product images:



Western blot analysis of Acetyl-Histone H3 phosphorylation expression in TSA treated RAW264.7 whole cell lysates, The lane on the left is treated with the antigen-specific peptide.