

## Product datasheet for **TA325509**

### HDAC10 Rabbit Polyclonal Antibody

#### Product data:

Product Type:	Primary Antibodies
Applications:	IHC, WB
Recommended Dilution:	WB: 1:500-1:2000; IHC: 1:50-1:200
Reactivity:	Human, Mouse, Rat
Host:	Rabbit
Isotype:	IgG
Clonality:	Polyclonal
Immunogen:	The antiserum was produced against a synthesized A synthesized peptide derived from human HDAC10.
Formulation:	Rabbit IgG in phosphate buffered saline , pH 7.4, 150mM NaCl, 0.02% sodium azide and 50% glycerol.
Concentration:	lot specific
Purification:	The antibody was affinity-purified from rabbit antiserum by affinity-chromatography using epitope-specific peptide.
Conjugation:	Unconjugated
Storage:	Store at -20°C as received.
Stability:	Stable for 12 months from date of receipt.
Gene Name:	histone deacetylase 10
Database Link:	<a href="#">NP_001152758</a> <a href="#">Entrez Gene 170787 MouseEntrez Gene 362981 RatEntrez Gene 83933 Human Q969S8</a>
Background:	HDAC10 Responsible for the deacetylation of lysine residues on the N-terminal part of the core histones (H2A, H2B, H3 and H4). Histone deacetylation gives a tag for epigenetic repression and plays an important role in transcriptional regulation, cell cycle progression and developmental events. Histone deacetylases act via the formation of large multiprotein complexes. Belongs to the histone deacetylase family. Type 2 subfamily. Interacts with HDAC2, HDAC3 and NCOR2. 4 isoforms of the human protein are produced by alternative splicing.

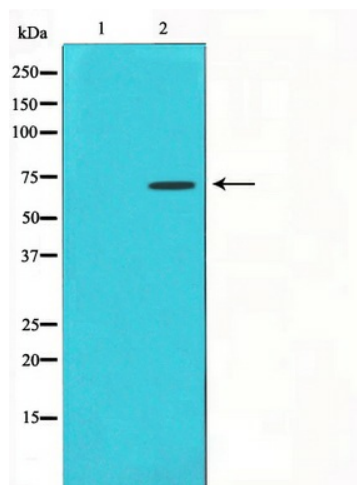


[View online »](#)

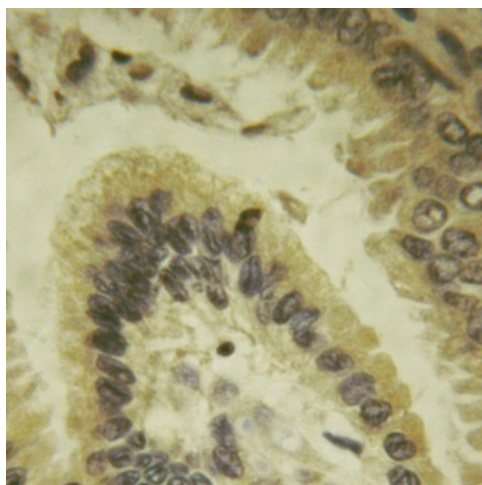
Synonyms: HD10

Protein Families: Druggable Genome, Transcription Factors

### Product images:



Western blot analysis on COS7 cell lysate using HDAC10 Antibody



Immunohistochemical analysis of paraffin-embedded human lung carcinoma tissue using HDAC10 Antibody.