

## Product datasheet for **TA325506**

### HDAC1 Rabbit Polyclonal Antibody

#### Product data:

Product Type:	Primary Antibodies
Applications:	WB
Recommended Dilution:	WB: 1:500-1:2000; IHC: 1:50-1:200
Reactivity:	Human, Mouse, Rat
Host:	Rabbit
Isotype:	IgG
Clonality:	Polyclonal
Immunogen:	The antiserum was produced against A synthesized peptide derived from human HDAC1
Formulation:	Rabbit IgG in phosphate buffered saline , pH 7.4, 150mM NaCl, 0.02% sodium azide and 50% glycerol.
Concentration:	lot specific
Purification:	The antibody was affinity-purified from rabbit antiserum by affinity-chromatography using epitope-specific peptide.
Conjugation:	Unconjugated
Storage:	Store at -20°C as received.
Stability:	Stable for 12 months from date of receipt.
Predicted Protein Size:	55 kDa
Gene Name:	histone deacetylase 1
Database Link:	<a href="#">NP_004955</a> <a href="#">Entrez Gene 297893 Rat</a> <a href="#">Entrez Gene 433759 Mouse</a> <a href="#">Entrez Gene 3065 Human</a> <a href="#">Q13547</a>
Background:	Histone acetylation and deacetylation, catalyzed by multisubunit complexes, play a key role in the regulation of eukaryotic gene expression. The protein encoded by this gene belongs to the histone deacetylase/acuc/apha family and is a component of the histone deacetylase complex.
Synonyms:	GON-10; HD1; RPD3; RPD3L1

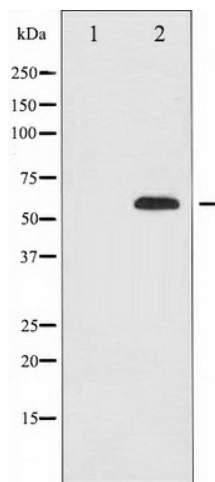


[View online »](#)

**Protein Families:** Adult stem cells, Druggable Genome, Stem cell - Pluripotency, Stem cell relevant signaling - DSL/Notch pathway, Transcription Factors

**Protein Pathways:** Cell cycle, Chronic myeloid leukemia, Huntington's disease, Notch signaling pathway, Pathways in cancer

**Product images:**



Western blot analysis of HDAC1 expression in NIH-3T3 whole cell lysates, The lane on the left is treated with the antigen-specific peptide.