

## Product datasheet for **TA325505**

### Histone H2A.X (H2AFX) Rabbit Polyclonal Antibody

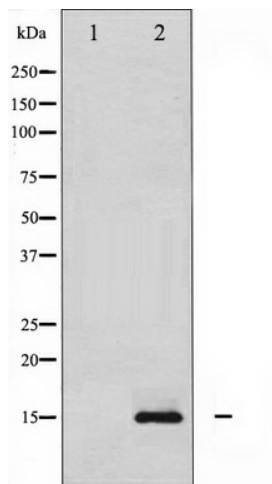
#### Product data:

Product Type:	Primary Antibodies
Applications:	WB
Recommended Dilution:	WB: 1:500-1:2000
Reactivity:	Human, Mouse, Rat
Modifications:	Phospho-specific
Host:	Rabbit
Isotype:	IgG
Clonality:	Polyclonal
Immunogen:	The antiserum was produced against A synthesized peptide derived from human Histone H2A.X around the phosphorylation site of Serine 139
Formulation:	Rabbit IgG in phosphate buffered saline , pH 7.4, 150mM NaCl, 0.02% sodium azide and 50% glycerol.
Concentration:	lot specific
Purification:	The antibody was affinity-purified from rabbit antiserum by affinity-chromatography using epitope-specific peptide.
Conjugation:	Unconjugated
Storage:	Store at -20°C as received.
Stability:	Stable for 12 months from date of receipt.
Predicted Protein Size:	15 kDa
Gene Name:	H2A histone family member X
Database Link:	<a href="#">NP_002096</a> <a href="#">Entrez Gene 15270 MouseEntrez Gene 500987 RatEntrez Gene 3014 Human P16104</a>
Background:	Histones are basic nuclear proteins that are responsible for the nucleosome structure of the chromosomal fiber in eukaryotes. Two molecules of each of the four core histones (H2A, H2B, H3, and H4) form an octamer, around which approximately 146 bp of DNA is wrapped in repeating units, called nucleosomes.



[View online »](#)

**Synonyms:** H2A; H2A.X; H2AX; X  
**Protein Families:** Druggable Genome  
**Protein Pathways:** Systemic lupus erythematosus

**Product images:**

Western blot analysis of Histone H2A.X phosphorylation expression in UV treated HeLa whole cell lysates, The lane on the left is treated with the antigen-specific peptide.