

## Product datasheet for **TA325503**

### GATA4 Rabbit Polyclonal Antibody

#### Product data:

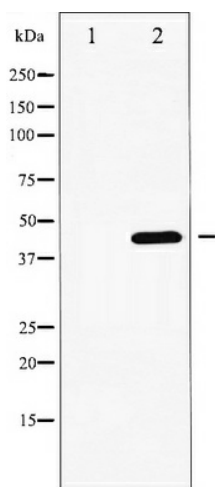
Product Type:	Primary Antibodies
Applications:	WB
Recommended Dilution:	WB: 1:500-1:2000; IF/ICC: 1:100-1:500
Reactivity:	Human, Mouse, Rat
Modifications:	Phospho-specific
Host:	Rabbit
Isotype:	IgG
Clonality:	Polyclonal
Immunogen:	The antiserum was produced against A synthesized peptide derived from human GATA4 around the phosphorylation site of Serine 262
Formulation:	Rabbit IgG in phosphate buffered saline , pH 7.4, 150mM NaCl, 0.02% sodium azide and 50% glycerol.
Concentration:	lot specific
Purification:	The antibody was affinity-purified from rabbit antiserum by affinity-chromatography using epitope-specific peptide.
Conjugation:	Unconjugated
Storage:	Store at -20°C as received.
Stability:	Stable for 12 months from date of receipt.
Predicted Protein Size:	48 kDa
Gene Name:	GATA binding protein 4
Database Link:	<a href="#">NP_002043</a> <a href="#">Entrez Gene 14463 MouseEntrez Gene 54254 RatEntrez Gene 2626 Human P43694</a>
Background:	This gene encodes a member of the GATA family of zinc-finger transcription factors. Members of this family recognize the GATA motif which is present in the promoters of many genes.
Synonyms:	ASD2; TACHD; TOF; VSD1



[View online »](#)

**Protein Families:** Embryonic stem cells, ES Cell Differentiation/IPS, Induced pluripotent stem cells, Transcription Factors

**Product images:**



Western blot analysis of GATA4 phosphorylation expression in 293 whole cell lysates, The lane on the left is treated with the antigen-specific peptide.