

## Product datasheet for **TA325501**

### **GATA4 Rabbit Polyclonal Antibody**

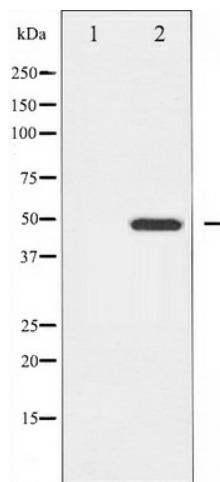
#### **Product data:**

<b>Product Type:</b>	Primary Antibodies
<b>Applications:</b>	WB
<b>Recommended Dilution:</b>	WB: 1:500-1:2000; IF/ICC: 1:100-1:500
<b>Reactivity:</b>	Human, Mouse, Rat
<b>Host:</b>	Rabbit
<b>Isotype:</b>	IgG
<b>Clonality:</b>	Polyclonal
<b>Immunogen:</b>	The antiserum was produced against A synthesized peptide derived from human GATA4
<b>Formulation:</b>	Rabbit IgG in phosphate buffered saline , pH 7.4, 150mM NaCl, 0.02% sodium azide and 50% glycerol.
<b>Concentration:</b>	lot specific
<b>Purification:</b>	The antibody was affinity-purified from rabbit antiserum by affinity-chromatography using epitope-specific peptide.
<b>Conjugation:</b>	Unconjugated
<b>Storage:</b>	Store at -20°C as received.
<b>Stability:</b>	Stable for 12 months from date of receipt.
<b>Predicted Protein Size:</b>	48 kDa
<b>Gene Name:</b>	GATA binding protein 4
<b>Database Link:</b>	<a href="#">NP_002043</a> <a href="#">Entrez Gene 14463 Mouse</a> <a href="#">Entrez Gene 54254 Rat</a> <a href="#">Entrez Gene 2626 Human</a> <a href="#">P43694</a>
<b>Background:</b>	This gene encodes a member of the GATA family of zinc-finger transcription factors. Members of this family recognize the GATA motif which is present in the promoters of many genes.
<b>Synonyms:</b>	ASD2; TACHD; TOF; VSD1
<b>Protein Families:</b>	Embryonic stem cells, ES Cell Differentiation/IPS, Induced pluripotent stem cells, Transcription Factors



[View online »](#)

## Product images:



Western blot analysis of GATA4 expression in HeLa whole cell lysates, The lane on the left is treated with the antigen-specific peptide.