

Product datasheet for **TA325499**

GATA3 Rabbit Polyclonal Antibody

Product data:

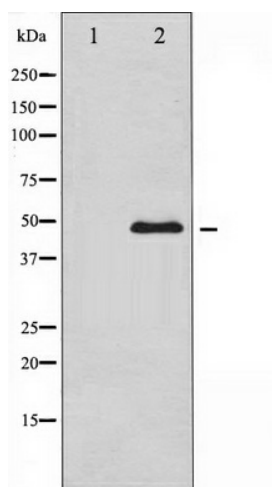
| | |
|-------------------------|--|
| Product Type: | Primary Antibodies |
| Applications: | WB |
| Recommended Dilution: | WB: 1:500-1:2000; IF/ICC: 1:100-1:500 |
| Reactivity: | Human, Mouse |
| Modifications: | Phospho-specific |
| Host: | Rabbit |
| Isotype: | IgG |
| Clonality: | Polyclonal |
| Immunogen: | The antiserum was produced against A synthesized peptide derived from human GATA3 around the phosphorylation site of Serine 308 |
| Formulation: | Rabbit IgG in phosphate buffered saline , pH 7.4, 150mM NaCl, 0.02% sodium azide and 50% glycerol. |
| Concentration: | lot specific |
| Purification: | The antibody was affinity-purified from rabbit antiserum by affinity-chromatography using epitope-specific peptide. |
| Conjugation: | Unconjugated |
| Storage: | Store at -20°C as received. |
| Stability: | Stable for 12 months from date of receipt. |
| Predicted Protein Size: | 47 kDa |
| Gene Name: | GATA binding protein 3 |
| Database Link: | NP_001002295 Entrez Gene 14462 Mouse Entrez Gene 2625 Human P23771 |
| Background: | GATA3 is a transcriptional activator which binds to the enhancer of the T cell receptor alpha and delta genes. Binds to the consensus sequence 5'-AGATAG-3'. |
| Synonyms: | HDR; HDRS |



[View online »](#)

Protein Families: Adult stem cells, ES Cell Differentiation/IPS, Stem cell relevant signaling - JAK/STAT signaling pathway, Transcription Factors

Product images:



Western blot analysis of GATA3 phosphorylation expression in HeLa whole cell lysates, The lane on the left is treated with the antigen-specific peptide.