

## Product datasheet for **TA325498**

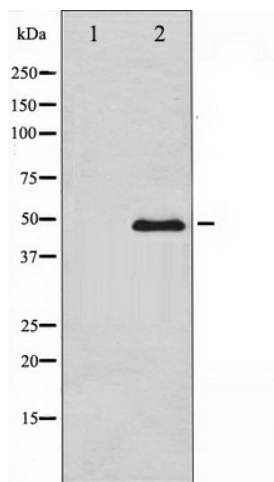
### GATA3 Rabbit Polyclonal Antibody

#### Product data:

Product Type:	Primary Antibodies
Applications:	WB
Recommended Dilution:	WB: 1:500-1:2000; IHC: 1:50-1:200; IF/ICC: 1:100-1:500
Reactivity:	Human, Mouse
Host:	Rabbit
Isotype:	IgG
Clonality:	Polyclonal
Immunogen:	The antiserum was produced against A synthesized peptide derived from human GATA3
Formulation:	Rabbit IgG in phosphate buffered saline , pH 7.4, 150mM NaCl, 0.02% sodium azide and 50% glycerol.
Concentration:	lot specific
Purification:	The antibody was affinity-purified from rabbit antiserum by affinity-chromatography using epitope-specific peptide.
Conjugation:	Unconjugated
Storage:	Store at -20°C as received.
Stability:	Stable for 12 months from date of receipt.
Predicted Protein Size:	47 kDa
Gene Name:	GATA binding protein 3
Database Link:	<a href="#">NP_001002295</a> <a href="#">Entrez Gene 14462 Mouse</a> <a href="#">Entrez Gene 2625 Human</a> <a href="#">P23771</a>
Background:	GATA2 Transcriptional activator which regulates endothelin-1 gene expression in endothelial cells. Binds to the consensus sequence 5'-AGATAG-3'. Endothelial cells. 2 isoforms of the human protein are produced by alternative splicing.
Synonyms:	HDR; HDRS
Protein Families:	Adult stem cells, ES Cell Differentiation/IPS, Stem cell relevant signaling - JAK/STAT signaling pathway, Transcription Factors



[View online »](#)

**Product images:**

Western blot analysis of GATA3 expression in HeLa whole cell lysates, The lane on the left is treated with the antigen-specific peptide.