

## Product datasheet for **TA325496**

### GATA1 Rabbit Polyclonal Antibody

#### Product data:

Product Type:	Primary Antibodies
Applications:	WB
Recommended Dilution:	WB: 1:500-1:2000; IHC: 1:50-1:200; IP
Reactivity:	Human, Mouse, Rat
Modifications:	Phospho-specific
Host:	Rabbit
Isotype:	IgG
Clonality:	Polyclonal
Immunogen:	The antiserum was produced against A synthesized peptide derived from human GATA1 around the phosphorylation site of Serine 142
Formulation:	Rabbit IgG in phosphate buffered saline , pH 7.4, 150mM NaCl, 0.02% sodium azide and 50% glycerol.
Concentration:	lot specific
Purification:	The antibody was affinity-purified from rabbit antiserum by affinity-chromatography using epitope-specific peptide.
Conjugation:	Unconjugated
Storage:	Store at -20°C as received.
Stability:	Stable for 12 months from date of receipt.
Predicted Protein Size:	43 kDa
Gene Name:	GATA binding protein 1
Database Link:	<a href="#">NP_002040</a> <a href="#">Entrez Gene 14460 Mouse</a> <a href="#">Entrez Gene 25172 Rat</a> <a href="#">Entrez Gene 2623 Human</a> <a href="#">P15976</a>
Background:	GATA1 Transcriptional activator which probably serves as a general switch factor for erythroid development. It binds to DNA sites with the consensus sequence [AT]GATA[AG] within regulatory regions of globin genes and of other genes expressed in erythroid cells. May form homodimers or heterodimers with other isoforms.

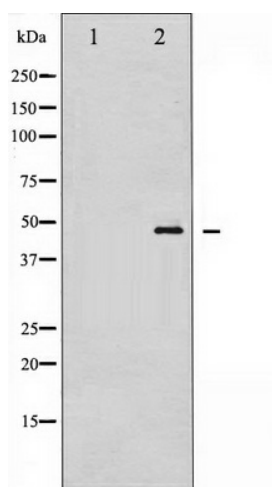


[View online »](#)

**Synonyms:** ERYF1; GATA-1; GF-1; GF1; NF-E1; NFE1; XLANP; XLTDA; XLTT

**Protein Families:** Adult stem cells, Druggable Genome, ES Cell Differentiation/IPS, Transcription Factors

**Product images:**



Western blot analysis of GATA1 phosphorylation expression in K562 whole cell lysates, The lane on the left is treated with the antigen-specific peptide.