

Product datasheet for **TA325493**

GABA A Receptor beta 1 (GABRB1) Rabbit Polyclonal Antibody

Product data:

Product Type:	Primary Antibodies
Applications:	WB
Recommended Dilution:	WB: 1:500-1:2000; IHC: 1:50-1:200
Reactivity:	Human, Mouse, Rat
Modifications:	Phospho-specific
Host:	Rabbit
Isotype:	IgG
Clonality:	Polyclonal
Immunogen:	The antiserum was produced against A synthesized peptide derived from human GABA-RB around the phosphorylation site of Serine 434
Formulation:	Rabbit IgG in phosphate buffered saline , pH 7.4, 150mM NaCl, 0.02% sodium azide and 50% glycerol.
Concentration:	lot specific
Purification:	The antibody was affinity-purified from rabbit antiserum by affinity-chromatography using epitope-specific peptide.
Conjugation:	Unconjugated
Storage:	Store at -20°C as received.
Stability:	Stable for 12 months from date of receipt.
Predicted Protein Size:	55 kDa
Gene Name:	gamma-aminobutyric acid type A receptor beta1 subunit
Database Link:	NP_000803 Entrez Gene 14400 Mouse Entrez Gene 25450 Rat Entrez Gene 2560 Human P18505
Background:	GABRB1 GABA, the major inhibitory neurotransmitter in the vertebrate brain, mediates neuronal inhibition by binding to the GABA/benzodiazepine receptor and opening an integral chloride channel.
Synonyms:	beta 1; gamma-aminobutyric acid (GABA) A receptor

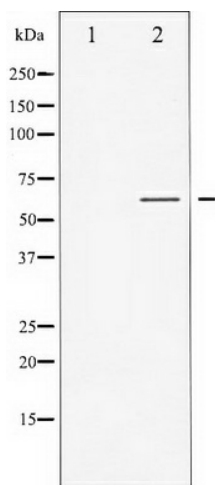


[View online »](#)

Protein Families: Druggable Genome, Ion Channels: Cys-loop Receptors, Transmembrane

Protein Pathways: Neuroactive ligand-receptor interaction

Product images:



Western blot analysis of GABA-RB phosphorylation expression in COS7 whole cell lysates, The lane on the left is treated with the antigen-specific peptide.