

## Product datasheet for **TA325492**

### GAB1 Rabbit Polyclonal Antibody

#### Product data:

Product Type:	Primary Antibodies
Applications:	WB
Recommended Dilution:	WB: 1:500-1:2000
Reactivity:	Human, Mouse
Modifications:	Phospho-specific
Host:	Rabbit
Isotype:	IgG
Clonality:	Polyclonal
Immunogen:	The antiserum was produced against A synthesized peptide derived from human GAB1 around the phosphorylation site of Tyrosine 627
Formulation:	Rabbit IgG in phosphate buffered saline , pH 7.4, 150mM NaCl, 0.02% sodium azide and 50% glycerol.
Concentration:	lot specific
Purification:	The antibody was affinity-purified from rabbit antiserum by affinity-chromatography using epitope-specific peptide.
Conjugation:	Unconjugated
Storage:	Store at -20°C as received.
Stability:	Stable for 12 months from date of receipt.
Predicted Protein Size:	110 kDa
Gene Name:	GRB2 associated binding protein 1
Database Link:	<a href="#">NP_002030</a> <a href="#">Entrez Gene 14388 Mouse</a> <a href="#">Entrez Gene 2549 Human</a> <a href="#">Q13480</a>
Background:	Grb2-associated binding protein 1 is a member of the IRS-1-like multisubstrate docking protein family. Contains an N-terminal pleckstrin homology (PH) domain and several proline-rich SH3 domain-binding sequences.
Synonyms:	GRB2-associated binding protein 1

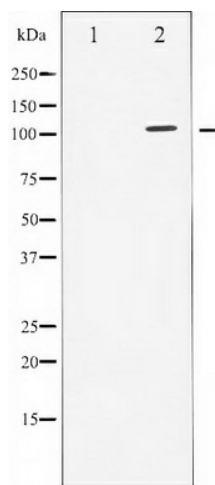


[View online »](#)

Protein Families: Druggable Genome

Protein Pathways: ErbB signaling pathway, Neurotrophin signaling pathway, Renal cell carcinoma

**Product images:**



Western blot analysis of GAB1 phosphorylation expression in EGF treated HuvEc whole cell lysates, The lane on the left is treated with the antigen-specific peptide.