

## Product datasheet for **TA325490**

### G3BP (G3BP1) Rabbit Polyclonal Antibody

#### Product data:

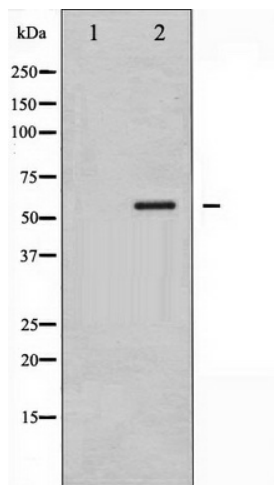
|                         |   |
|-------------------------|---|
| Product Type:           | Primary Antibodies  |
| Applications:           | WB  |
| Recommended Dilution:   | WB: 1:500-1:2000; IHC: 1:50-1:200   |
| Reactivity:             | Human, Mouse  |
| Modifications:          | Phospho-specific  |
| Host:                   | Rabbit  |
| Isotype:                | IgG   |
| Clonality:              | Polyclonal  |
| Immunogen:              | The antiserum was produced against A synthesized peptide derived from human G3BP-1 around the phosphorylation site of Serine 232  |
| Formulation:            | Rabbit IgG in phosphate buffered saline , pH 7.4, 150mM NaCl, 0.02% sodium azide and 50% glycerol.  |
| Concentration:          | lot specific  |
| Purification:           | The antibody was affinity-purified from rabbit antiserum by affinity-chromatography using epitope-specific peptide.   |
| Conjugation:            | Unconjugated  |
| Storage:                | Store at -20°C as received.   |
| Stability:              | Stable for 12 months from date of receipt.  |
| Predicted Protein Size: | 60 kDa  |
| Gene Name:              | G3BP stress granule assembly factor 1   |
| Database Link:          | <a href="#">NP_005745</a><br><a href="#">Entrez Gene 27041 Mouse</a> <a href="#">Entrez Gene 10146 Human</a><br><a href="#">Q13283</a>  |
| Background:             | G3BP-1 an hnRNA-binding protein and endoribonuclease that participates in the Ras signal transduction pathway. A regulated effector of stress granule (SG) assembly. SGs are involved in mRNA sorting in the storing of untranslated mRNAs. |
| Synonyms:               | G3BP; HDH-VIII  |



[View online »](#)

Protein Families: Druggable Genome

**Product images:**



Western blot analysis of G3BP-1 phosphorylation expression in 293 whole cell lysates, The lane on the left is treated with the antigen-specific peptide.