

Product datasheet for **TA325487**

FRS2 Rabbit Polyclonal Antibody

Product data:

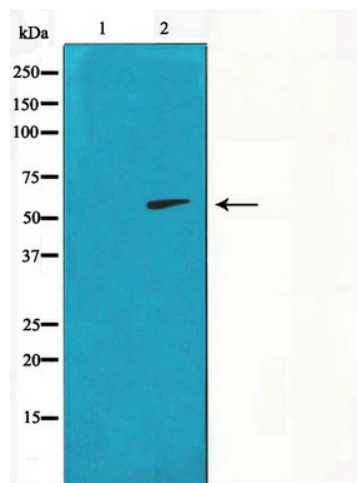
Product Type:	Primary Antibodies
Applications:	IHC, WB
Recommended Dilution:	WB: 1:500-1:2000; IHC: 1:50-1:200
Reactivity:	Human, Mouse
Modifications:	Phospho-specific
Host:	Rabbit
Isotype:	IgG
Clonality:	Polyclonal
Immunogen:	The antiserum was produced against a synthesized A synthesized peptide derived from human FRS2 around the phosphorylation site of Tyrosine 436.
Formulation:	Rabbit IgG in phosphate buffered saline , pH 7.4, 150mM NaCl, 0.02% sodium azide and 50% glycerol.
Concentration:	lot specific
Purification:	The antibody was affinity-purified from rabbit antiserum by affinity-chromatography using epitope-specific peptide.
Conjugation:	Unconjugated
Storage:	Store at -20°C as received.
Stability:	Stable for 12 months from date of receipt.
Gene Name:	fibroblast growth factor receptor substrate 2
Database Link:	NP_001036020 Entrez Gene 327826 Mouse Entrez Gene 10818 Human Q8WU20
Background:	FRS2 is an adaptor protein involved in fibroblast growth factor receptor (FGFR) signaling. Plays an important role in linking FGFR and nerve growth factor receptors with Ras/MAPK signaling pathways.
Synonyms:	FRS1A; FRS2A; FRS2alpha; SNT; SNT-1; SNT1
Protein Families:	Druggable Genome



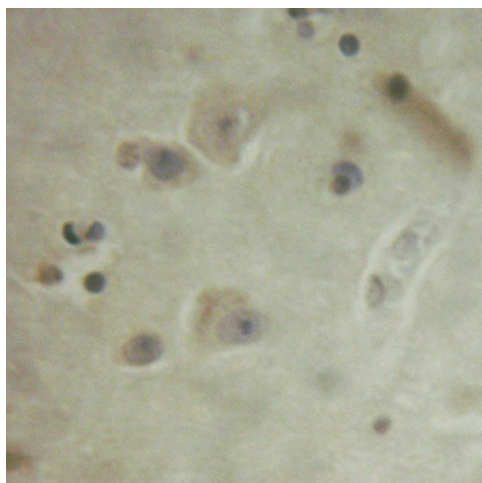
[View online »](#)

Protein Pathways: Neurotrophin signaling pathway

Product images:



Western blot analysis on COS7 cell lysate using Phospho-FRS2 (Tyr436) Antibody.



Immunohistochemical analysis of paraffin-embedded human brain tissue using Phospho-FRS2 (Tyr436) Antibody.