

Product datasheet for **TA325485**

FRS2 Rabbit Polyclonal Antibody

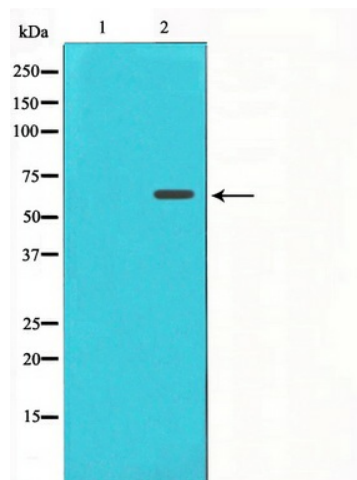
Product data:

Product Type:	Primary Antibodies
Applications:	WB
Recommended Dilution:	WB: 1:500-1:2000
Reactivity:	Human, Mouse
Host:	Rabbit
Isotype:	IgG
Clonality:	Polyclonal
Immunogen:	The antiserum was produced against a synthesized A synthesized peptide derived from human FRS2.
Formulation:	Rabbit IgG in phosphate buffered saline , pH 7.4, 150mM NaCl, 0.02% sodium azide and 50% glycerol.
Concentration:	lot specific
Purification:	The antibody was affinity-purified from rabbit antiserum by affinity-chromatography using epitope-specific peptide.
Conjugation:	Unconjugated
Storage:	Store at -20°C as received.
Stability:	Stable for 12 months from date of receipt.
Gene Name:	fibroblast growth factor receptor substrate 2
Database Link:	NP_001036020 Entrez Gene 327826 Mouse Entrez Gene 10818 Human Q8WU20
Background:	FRS2 an adaptor protein involved in fibroblast growth factor receptor (FGFR) signaling. Plays an important role in linking FGFR and nerve growth factor receptors with Ras/MAPK signaling pathways. Note: This description may include information from UniProtKB.
Synonyms:	FRS1A; FRS2A; FRS2alpha; SNT; SNT-1; SNT1
Protein Families:	Druggable Genome
Protein Pathways:	Neurotrophin signaling pathway



[View online »](#)

Product images:



Western blot analysis on COS7 cell lysate using FRS2 Antibody