

## Product datasheet for **TA325481**

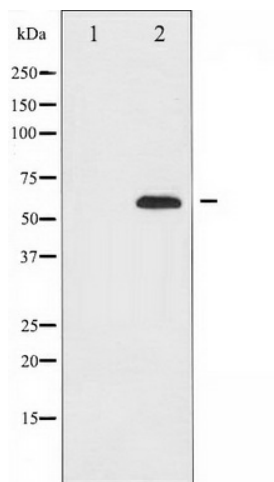
### FOXO4 Rabbit Polyclonal Antibody

#### Product data:

Product Type:	Primary Antibodies
Applications:	WB
Recommended Dilution:	WB: 1:500-1:2000; IF/ICC: 1:100-1:500
Reactivity:	Human, Mouse
Host:	Rabbit
Isotype:	IgG
Clonality:	Polyclonal
Immunogen:	The antiserum was produced against A synthesized peptide derived from human FOXO4
Formulation:	Rabbit IgG in phosphate buffered saline , pH 7.4, 150mM NaCl, 0.02% sodium azide and 50% glycerol.
Concentration:	lot specific
Purification:	The antibody was affinity-purified from rabbit antiserum by affinity-chromatography using epitope-specific peptide.
Conjugation:	Unconjugated
Storage:	Store at -20°C as received.
Stability:	Stable for 12 months from date of receipt.
Predicted Protein Size:	65 kDa
Gene Name:	forkhead box O4
Database Link:	<a href="#">NP_005929</a> <a href="#">Entrez Gene 54601 Mouse</a> <a href="#">Entrez Gene 4303 Human</a> <a href="#">P98177</a>
Background:	FOXO4 is a transcription factor AFX1 containing 1 fork-head domain. May play a role in the insulin signaling pathway. Involved in acute leukemias by a chromosomal translocation t(X;11)(q13;q23) that involves MLLT7 and MLL/HRX.
Synonyms:	AFX; AFX1; MLLT7
Protein Families:	Transcription Factors



[View online »](#)

**Product images:**

Western blot analysis of FOXO4 expression in K562 whole cell lysates, The lane on the left is treated with the antigen-specific peptide.