

Product datasheet for **TA325479**

FOXO3 Rabbit Polyclonal Antibody

Product data:

Product Type:	Primary Antibodies
Applications:	WB
Recommended Dilution:	WB: 1:500-1:2000; IHC: 1:50-1:200
Reactivity:	Human, Mouse, Rat
Modifications:	Phospho-specific
Host:	Rabbit
Isotype:	IgG
Clonality:	Polyclonal
Immunogen:	The antiserum was produced against A synthesized peptide derived from human FKHRL1 around the phosphorylation site of Serine 253
Formulation:	Rabbit IgG in phosphate buffered saline , pH 7.4, 150mM NaCl, 0.02% sodium azide and 50% glycerol.
Concentration:	lot specific
Purification:	The antibody was affinity-purified from rabbit antiserum by affinity-chromatography using epitope-specific peptide.
Conjugation:	Unconjugated
Storage:	Store at -20°C as received.
Stability:	Stable for 12 months from date of receipt.
Predicted Protein Size:	97 kDa
Gene Name:	forkhead box O3
Database Link:	NP_001446 Entrez Gene 56484 MouseEntrez Gene 294515 RatEntrez Gene 2309 Human O43524
Background:	This gene belongs to the forkhead family of transcription factors which are characterized by a distinct forkhead domain. This gene likely functions as a trigger for apoptosis through expression of genes necessary for cell death.
Synonyms:	AF6q21; FKHRL1; FKHRL1P2; FOXO2; FOXO3A

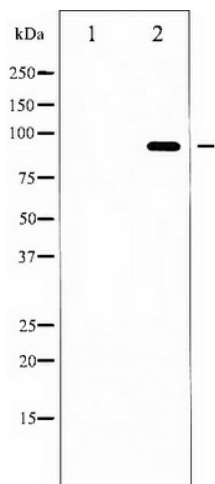


[View online »](#)

Protein Families: Druggable Genome, Transcription Factors

Protein Pathways: Chemokine signaling pathway, Endometrial cancer, Neurotrophin signaling pathway, Non-small cell lung cancer

Product images:



Western blot analysis of FOXO3 phosphorylation expression in serum treated NIH-3T3 whole cell lysates, The lane on the left is treated with the antigen-specific peptide.