

## Product datasheet for **TA325476**

### FOXO1 Rabbit Polyclonal Antibody

#### Product data:

Product Type:	Primary Antibodies
Applications:	WB
Recommended Dilution:	WB: 1:500-1:2000; IHC: 1:50-1:200
Reactivity:	Human, Mouse, Rat
Modifications:	Phospho-specific
Host:	Rabbit
Isotype:	IgG
Clonality:	Polyclonal
Immunogen:	The antiserum was produced against A synthesized peptide derived from human FOXO1/3/4-pan around the phosphorylation site of Threonine 24/32
Formulation:	Rabbit IgG in phosphate buffered saline , pH 7.4, 150mM NaCl, 0.02% sodium azide and 50% glycerol.
Concentration:	lot specific
Purification:	The antibody was affinity-purified from rabbit antiserum by affinity-chromatography using epitope-specific peptide.
Conjugation:	Unconjugated
Storage:	Store at -20°C as received.
Stability:	Stable for 12 months from date of receipt.
Predicted Protein Size:	78 kDa
Gene Name:	forkhead box O1
Database Link:	<a href="#">NP_002006</a> <a href="#">Entrez Gene 56458 MouseEntrez Gene 84482 RatEntrez Gene 2308 Human Q12778</a>
Background:	FOXO4 transcription factor AFX1 containing 1 fork-head domain. May play a role in the insulin signaling pathway. Involved in acute leukemias by a chromosomal translocation t(X;11)(q13;q23) that involves MLLT7 and MLL/HRX. The result is a rogue activator protein.
Synonyms:	FKH1; FKHR; FOXO1A

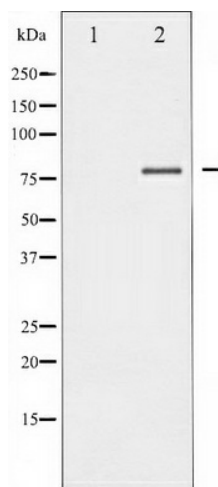


[View online »](#)

**Protein Families:** Druggable Genome, Transcription Factors

**Protein Pathways:** Insulin signaling pathway, Pathways in cancer, Prostate cancer

**Product images:**



Western blot analysis of FOXO1/3/4-pan phosphorylation expression in Serum treated 293 whole cell lysates, The lane on the left is treated with the antigen-specific peptide.