

Product datasheet for **TA325472**

FOXO1 Rabbit Polyclonal Antibody

Product data:

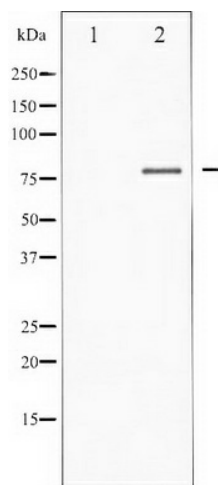
Product Type:	Primary Antibodies
Applications:	WB
Recommended Dilution:	WB: 1:500-1:2000; IHC: 1:50-1:200
Reactivity:	Human, Mouse, Rat
Host:	Rabbit
Isotype:	IgG
Clonality:	Polyclonal
Immunogen:	The antiserum was produced against A synthesized peptide derived from human FOXO1/3/4-pan
Formulation:	Rabbit IgG in phosphate buffered saline , pH 7.4, 150mM NaCl, 0.02% sodium azide and 50% glycerol.
Concentration:	lot specific
Purification:	The antibody was affinity-purified from rabbit antiserum by affinity-chromatography using epitope-specific peptide.
Conjugation:	Unconjugated
Storage:	Store at -20°C as received.
Stability:	Stable for 12 months from date of receipt.
Predicted Protein Size:	78 kDa
Gene Name:	forkhead box O1
Database Link:	NP_002006 Entrez Gene 56458 Mouse Entrez Gene 84482 Rat Entrez Gene 2308 Human Q12778
Background:	FOXO4 transcription factor AFX1 containing 1 fork-head domain. May play a role in the insulin signaling pathway. Involved in acute leukemias by a chromosomal translocation t(X;11)(q13;q23) that involves MLLT7 and MLL/HRX. The result is a rogue activator protein.
Synonyms:	FKH1; FKHR; FOXO1A
Protein Families:	Druggable Genome, Transcription Factors



[View online »](#)

Protein Pathways: Insulin signaling pathway, Pathways in cancer, Prostate cancer

Product images:



Western blot analysis of FOXO1/3/4-pan expression in 293 whole cell lysates, The lane on the left is treated with the antigen-specific peptide.