

Product datasheet for **TA325464**

Filamin A (FLNA) Rabbit Polyclonal Antibody

Product data:

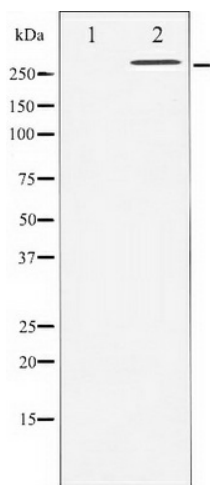
Product Type:	Primary Antibodies
Applications:	WB
Recommended Dilution:	WB: 1:500-1:2000; IHC: 1:50-1:200
Reactivity:	Human, Mouse, Rat
Host:	Rabbit
Isotype:	IgG
Clonality:	Polyclonal
Immunogen:	The antiserum was produced against A synthesized peptide derived from human Filamin A
Formulation:	Rabbit IgG in phosphate buffered saline , pH 7.4, 150mM NaCl, 0.02% sodium azide and 50% glycerol.
Concentration:	lot specific
Purification:	The antibody was affinity-purified from rabbit antiserum by affinity-chromatography using epitope-specific peptide.
Conjugation:	Unconjugated
Storage:	Store at -20°C as received.
Stability:	Stable for 12 months from date of receipt.
Predicted Protein Size:	280 kDa
Gene Name:	filamin A
Database Link:	NP_001447 Entrez Gene 192176 MouseEntrez Gene 293860 RatEntrez Gene 2316 Human P21333
Background:	FLNA a ubiquitous cytoskeletal protein that promotes orthogonal branching of actin filaments and links actin filaments to membrane glycoproteins. Plays an essential role in embryonic cell migration. Anchors various transmembrane proteins to the actin cytoskeleton and serves as a scaffold for a wide range of cytoplasmic signaling proteins.
Synonyms:	ABP-280; ABPX; CSBS; CVD1; FLN; FLN-A; FLN1; FMD; MNS; NHBP; OPD; OPD1; OPD2; XLVD; XMVD



[View online »](#)

Protein Pathways: Focal adhesion, MAPK signaling pathway

Product images:



Western blot analysis of Filamin A expression in EGF treated 293 whole cell lysates, The lane on the left is treated with the antigen-specific peptide.