

Product datasheet for **TA325457**

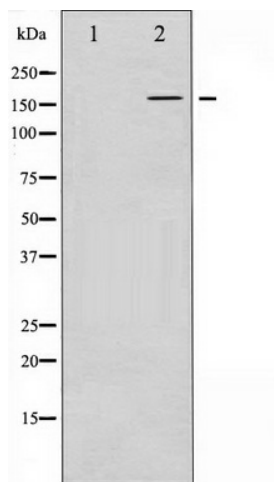
FANCD2 Rabbit Polyclonal Antibody

Product data:

Product Type:	Primary Antibodies
Applications:	WB
Recommended Dilution:	WB: 1:500-1:2000; IHC: 1:50-1:200
Reactivity:	Human, Mouse, Rat
Modifications:	Phospho-specific
Host:	Rabbit
Isotype:	IgG
Clonality:	Polyclonal
Immunogen:	The antiserum was produced against A synthesized peptide derived from human FANCD2 around the phosphorylation site of Serine 222
Formulation:	Rabbit IgG in phosphate buffered saline , pH 7.4, 150mM NaCl, 0.02% sodium azide and 50% glycerol.
Concentration:	lot specific
Purification:	The antibody was affinity-purified from rabbit antiserum by affinity-chromatography using epitope-specific peptide.
Conjugation:	Unconjugated
Storage:	Store at -20°C as received.
Stability:	Stable for 12 months from date of receipt.
Predicted Protein Size:	166 kDa
Gene Name:	Fanconi anemia complementation group D2
Database Link:	NP_001018125 Entrez Gene 211651 MouseEntrez Gene 312641 RatEntrez Gene 2177 Human Q9BXW9
Background:	FANCD2 Required for maintenance of chromosomal stability. Promotes accurate and efficient pairing of homologs during meiosis.
Synonyms:	FA-D2; FA4; FACD; FAD; FAD2; FANCD
Protein Families:	Druggable Genome



[View online »](#)

Product images:

Western blot analysis of FANCD2 phosphorylation expression in CalyculinA treated HT29 whole cell lysates, The lane on the left is treated with the antigen-specific peptide.