

Product datasheet for **TA325456**

Factor VIII (F8) Rabbit Polyclonal Antibody

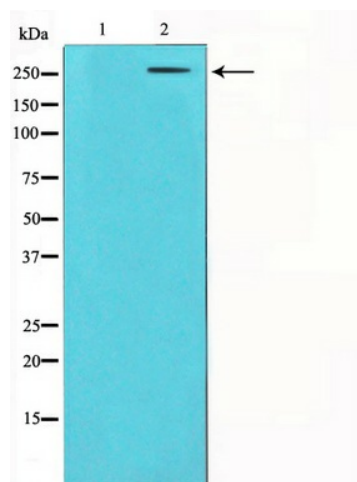
Product data:

| | |
|-----------------------|--|
| Product Type: | Primary Antibodies |
| Applications: | WB |
| Recommended Dilution: | WB: 1:500-1:2000 |
| Reactivity: | Human, Mouse |
| Host: | Rabbit |
| Isotype: | IgG |
| Clonality: | Polyclonal |
| Immunogen: | The antiserum was produced against a synthesized A synthesized peptide derived from human Factor VIII. |
| Formulation: | Rabbit IgG in phosphate buffered saline , pH 7.4, 150mM NaCl, 0.02% sodium azide and 50% glycerol. |
| Concentration: | lot specific |
| Purification: | The antibody was affinity-purified from rabbit antiserum by affinity-chromatography using epitope-specific peptide. |
| Conjugation: | Unconjugated |
| Storage: | Store at -20°C as received. |
| Stability: | Stable for 12 months from date of receipt. |
| Gene Name: | coagulation factor VIII |
| Database Link: | NP_063916 Entrez Gene 14069 Mouse Entrez Gene 2157 Human P00451 |
| Background: | F8 Factor VIII, along with calcium and phospholipid, acts as a cofactor for factor IXa when it converts factor X to the activated form, factor Xa. Belongs to the multicopper oxidase family. Interacts with vWF. vWF binding is essential for the stabilization of F8 in circulation. |
| Synonyms: | AHF; DXS1253E; F8B; F8C; FVIII; HEMA |
| Protein Families: | Druggable Genome, Secreted Protein |
| Protein Pathways: | Complement and coagulation cascades |



[View online »](#)

Product images:



Western blot analysis on HuvEc cell lysate using
Factor VIII Antibody