

## Product datasheet for **TA325452**

### ELK1 Rabbit Polyclonal Antibody

#### Product data:

Product Type:	Primary Antibodies
Applications:	WB
Recommended Dilution:	WB: 1:500-1:2000; IHC: 1:50-1:200; IP
Reactivity:	Human, Mouse, Rat
Modifications:	Phospho-specific
Host:	Rabbit
Isotype:	IgG
Clonality:	Polyclonal
Immunogen:	The antiserum was produced against A synthesized peptide derived from human Elk1 around the phosphorylation site of Serine 383
Formulation:	Rabbit IgG in phosphate buffered saline , pH 7.4, 150mM NaCl, 0.02% sodium azide and 50% glycerol.
Concentration:	lot specific
Purification:	The antibody was affinity-purified from rabbit antiserum by affinity-chromatography using epitope-specific peptide.
Conjugation:	Unconjugated
Storage:	Store at -20°C as received.
Stability:	Stable for 12 months from date of receipt.
Predicted Protein Size:	62 kDa
Gene Name:	ELK1, ETS transcription factor
Database Link:	<a href="#">NP_001107595</a> <a href="#">Entrez Gene 13712 MouseEntrez Gene 314436 RatEntrez Gene 2002 Human P19419</a>
Background:	This gene is a member of the Ets family of transcription factors and of the ternary complex factor (TCF) subfamily. Proteins of the TCF subfamily form a ternary complex by binding to the the serum response factor and the serum response element in the promoter of the c-fos proto-oncogene.



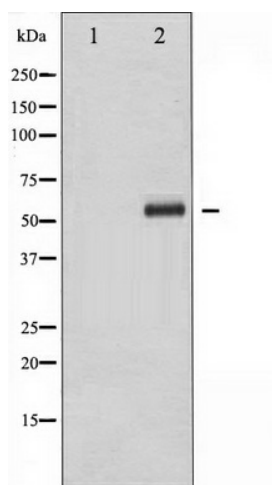
[View online »](#)

**Synonyms:** ELK1; ELK1 protein; ETS-like gene 1; member of ETS oncogene family; OTTHUMP00000023224; OTTHUMP00000023225

**Protein Families:** Druggable Genome, Transcription Factors

**Protein Pathways:** Endometrial cancer, ErbB signaling pathway, Focal adhesion, GnRH signaling pathway, Insulin signaling pathway, MAPK signaling pathway, Prion diseases

**Product images:**



Western blot analysis of Elk1 phosphorylation expression in UV treated HeLa whole cell lysates, The lane on the left is treated with the antigen-specific peptide.