

Product datasheet for **TA325450**

EIF4EBP1 Rabbit Polyclonal Antibody

Product data:

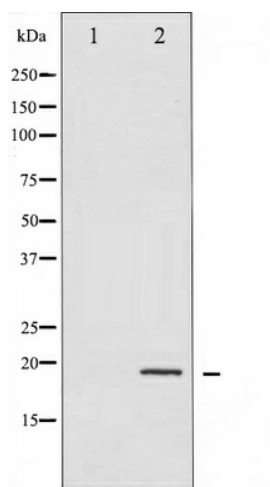
Product Type:	Primary Antibodies
Applications:	WB
Recommended Dilution:	WB: 1:500-1:2000; IHC: 1:50-1:200
Reactivity:	Human, Mouse, Rat
Modifications:	Phospho-specific
Host:	Rabbit
Isotype:	IgG
Clonality:	Polyclonal
Immunogen:	The antiserum was produced against A synthesized peptide derived from human 4E-BP1 around the phosphorylation site of Threonine 36
Formulation:	Rabbit IgG in phosphate buffered saline , pH 7.4, 150mM NaCl, 0.02% sodium azide and 50% glycerol.
Concentration:	lot specific
Purification:	The antibody was affinity-purified from rabbit antiserum by affinity-chromatography using epitope-specific peptide.
Conjugation:	Unconjugated
Storage:	Store at -20°C as received.
Stability:	Stable for 12 months from date of receipt.
Predicted Protein Size:	18 kDa
Gene Name:	eukaryotic translation initiation factor 4E binding protein 1
Database Link:	NP_004086 Entrez Gene 13685 MouseEntrez Gene 116636 RatEntrez Gene 1978 Human Q13541
Background:	4E-BP1 binds to eIF4E, preventing its assembly into the EIF4F complex and inhibiting cap-dependent translation. Phosphorylation of 4E-BP1 disrupts this binding, activating cap-dependent translation.
Synonyms:	4E-BP1; 4EBP1; BP-1; PHAS-I



[View online »](#)

Protein Pathways: Acute myeloid leukemia, ErbB signaling pathway, Insulin signaling pathway, mTOR signaling pathway

Product images:



Western blot analysis of 4E-BP1 phosphorylation expression in EGF treated MDA-MB-435 whole cell lysates, The lane on the left is treated with the antigen-specific peptide.