

## Product datasheet for **TA325446**

### EIF4E Rabbit Polyclonal Antibody

#### Product data:

Product Type:	Primary Antibodies
Applications:	WB
Recommended Dilution:	WB: 1:500-1:2000; IHC: 1:50-1:200
Reactivity:	Human, Mouse, Rat
Modifications:	Phospho-specific
Host:	Rabbit
Isotype:	IgG
Clonality:	Polyclonal
Immunogen:	The antiserum was produced against A synthesized peptide derived from human eIF4E around the phosphorylation site of Serine 209
Formulation:	Rabbit IgG in phosphate buffered saline , pH 7.4, 150mM NaCl, 0.02% sodium azide and 50% glycerol.
Concentration:	lot specific
Purification:	The antibody was affinity-purified from rabbit antiserum by affinity-chromatography using epitope-specific peptide.
Conjugation:	Unconjugated
Storage:	Store at -20°C as received.
Stability:	Stable for 12 months from date of receipt.
Predicted Protein Size:	25 kDa
Gene Name:	eukaryotic translation initiation factor 4E
Database Link:	<a href="#">NP_001124150</a> <a href="#">Entrez Gene 13684 MouseEntrez Gene 117045 RatEntrez Gene 1977 Human P06730</a>
Background:	eIF4E a protein of the eukaryotic initiation factor 4E family. Recognizes and binds the 7-methylguanosine-containing mRNA cap during an early step in the initiation of protein synthesis and facilitates ribosome binding by inducing the unwinding of the mRNAs secondary structures.

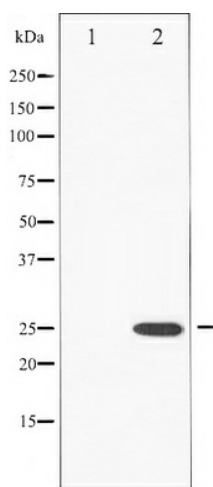


[View online »](#)

**Synonyms:** AUTS19; CBP; eIF-4E; EIF4E1; EIF4EL1; EIF4F

**Protein Pathways:** Insulin signaling pathway, mTOR signaling pathway

**Product images:**



Western blot analysis of eIF4E phosphorylation expression in FBS treated NIH-3T3 whole cell lysates, The lane on the left is treated with the antigen-specific peptide.