

## Product datasheet for **TA325444**

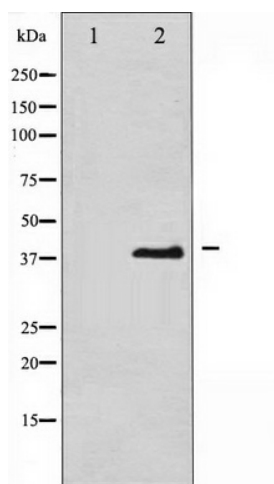
### eIF2 alpha (EIF2S1) Rabbit Polyclonal Antibody

#### Product data:

Product Type:	Primary Antibodies
Applications:	WB
Recommended Dilution:	WB: 1:500-1:2000
Reactivity:	Human, Mouse, Rat
Modifications:	Phospho-specific
Host:	Rabbit
Isotype:	IgG
Clonality:	Polyclonal
Immunogen:	The antiserum was produced against A synthesized peptide derived from human eIF2 alpha around the phosphorylation site of Serine 51
Formulation:	Rabbit IgG in phosphate buffered saline , pH 7.4, 150mM NaCl, 0.02% sodium azide and 50% glycerol.
Concentration:	lot specific
Purification:	The antibody was affinity-purified from rabbit antiserum by affinity-chromatography using epitope-specific peptide.
Conjugation:	Unconjugated
Storage:	Store at -20°C as received.
Stability:	Stable for 12 months from date of receipt.
Predicted Protein Size:	38 kDa
Gene Name:	eukaryotic translation initiation factor 2 subunit alpha
Database Link:	<a href="#">NP_004085</a> <a href="#">Entrez Gene 13665 Mouse</a> <a href="#">Entrez Gene 54318 Rat</a> <a href="#">Entrez Gene 1965 Human</a> <a href="#">P05198</a>
Background:	eIF2A a translation initiation factor that functions in the early steps of protein synthesis by forming a ternary complex with GTP and initiator tRNA. This complex binds to a 40s ribosomal subunit, followed by mRNA binding to form a 43S preinitiation complex.
Synonyms:	EIF-2; EIF-2A; EIF-2alpha; EIF2; EIF2A



[View online »](#)

**Product images:**

Western blot analysis of eIF2 alpha phosphorylation expression in IFN-a treated K562 whole cell lysates, The lane on the left is treated with the antigen-specific peptide.