

Product datasheet for **TA325440**

EGFR Rabbit Polyclonal Antibody

Product data:

Product Type:	Primary Antibodies
Applications:	WB
Recommended Dilution:	WB: 1:500-1:2000
Reactivity:	Human, Mouse, Rat
Modifications:	Phospho-specific
Host:	Rabbit
Isotype:	IgG
Clonality:	Polyclonal
Immunogen:	The antiserum was produced against a synthesized A synthesized peptide derived from human EGFR around the phosphorylation site of Sersine 1070.
Formulation:	Rabbit IgG in phosphate buffered saline , pH 7.4, 150mM NaCl, 0.02% sodium azide and 50% glycerol.
Concentration:	lot specific
Purification:	The antibody was affinity-purified from rabbit antiserum by affinity-chromatography using epitope-specific peptide.
Conjugation:	Unconjugated
Storage:	Store at -20°C as received.
Stability:	Stable for 12 months from date of receipt.
Gene Name:	epidermal growth factor receptor
Database Link:	NP_005219 Entrez Gene 13649 Mouse Entrez Gene 24329 Rat Entrez Gene 1956 Human P00533



[View online »](#)

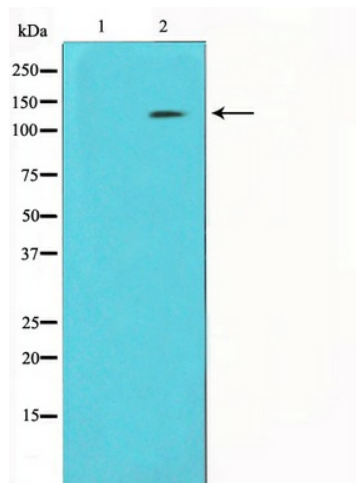
Background: EGFR is a receptor tyrosine kinase. Receptor for epidermal growth factor (EGF) and related growth factors including TGF-alpha, amphiregulin, betacellulin, heparin-binding EGF-like growth factor, GP30 and vaccinia virus growth factor. Is involved in the control of cell growth and differentiation. . A single-pass transmembrane tyrosine kinase. Ligand binding to this receptor results in receptor dimerization, autophosphorylation (in trans), activation of various downstream signaling molecules and lysosomal degradation. Can be phosphorylated and activated by Src. Activated EGFR binds the SH2 domain of phospholipase C-gamma (PLC-gamma), activating PLC-gamma-mediated downstream signaling. Phosphorylated EGFR binds Cbl, leading to its ubiquitination and degradation. Phosphorylation on Ser and Thr residues is thought to represent a mechanism for attenuation of EGFR kinase activity. Overexpressed in breast, head and neck cancers, correlating with poor survival. Activating somatic mutations seen in lung cancer, corresponding to minority of patients with strong response to EGFR inhibitor Iressa (gefitinib).

Synonyms: ERBB; ERBB1; HER1; mENA; NISBD2; PIG61

Protein Families: Adult stem cells, Cancer stem cells, Druggable Genome, ES Cell Differentiation/IPS, Protein Kinase, Secreted Protein, Stem cell relevant signaling - JAK/STAT signaling pathway, Transmembrane

Protein Pathways: Adherens junction, Bladder cancer, Calcium signaling pathway, Colorectal cancer, Cytokine-cytokine receptor interaction, Dorso-ventral axis formation, Endocytosis, Endometrial cancer, Epithelial cell signaling in Helicobacter pylori infection, ErbB signaling pathway, Focal adhesion, Gap junction, Glioma, GnRH signaling pathway, MAPK signaling pathway, Melanoma, Non-small cell lung cancer, Pancreatic cancer, Pathways in cancer, Prostate cancer, Regulation of actin cytoskeleton

Product images:



Western blot analysis on SK-OV3 cell lysate using Phospho-EGFR (Ser1070) Antibody