

## Product datasheet for **TA325433**

### EGFR Rabbit Polyclonal Antibody

#### Product data:

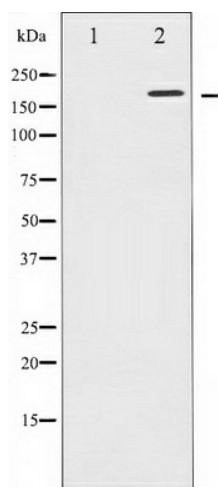
|                         |  |
|-------------------------|--|
| Product Type:           | Primary Antibodies   |
| Applications:           | WB   |
| Recommended Dilution:   | WB: 1:500-1:2000; IHC: 1:50-1:200; IF/ICC: 1:100-1:500   |
| Reactivity:             | Human, Mouse, Rat  |
| Modifications:          | Phospho-specific   |
| Host:                   | Rabbit   |
| Isotype:                | IgG  |
| Clonality:              | Polyclonal   |
| Immunogen:              | The antiserum was produced against A synthesized peptide derived from human EGFR around the phosphorylation site of Threonine 693  |
| Formulation:            | Rabbit IgG in phosphate buffered saline , pH 7.4, 150mM NaCl, 0.02% sodium azide and 50% glycerol.   |
| Concentration:          | lot specific   |
| Purification:           | The antibody was affinity-purified from rabbit antiserum by affinity-chromatography using epitope-specific peptide.  |
| Conjugation:            | Unconjugated   |
| Storage:                | Store at -20°C as received.  |
| Stability:              | Stable for 12 months from date of receipt.   |
| Predicted Protein Size: | 175 kDa  |
| Gene Name:              | epidermal growth factor receptor   |
| Database Link:          | <a href="#">NP_005219</a><br><a href="#">Entrez Gene 13649 Mouse</a> <a href="#">Entrez Gene 24329 Rat</a> <a href="#">Entrez Gene 1956 Human</a><br><a href="#">P00533</a>  |
| Background:             | EGFR is a receptor tyrosine kinase. Receptor for epidermal growth factor (EGF) and related growth factors including TGF-alpha, amphiregulin, betacellulin, heparin-binding EGF-like growth factor, GP30 and vaccinia virus growth factor. Is involved in the control of cell growth and differentiation. |



[View online »](#)

|                          |  |
|--------------------------|--|
| <b>Synonyms:</b>         | ERBB; ERBB1; HER1; mENA; NISBD2; PIG61   |
| <b>Protein Families:</b> | Adult stem cells, Cancer stem cells, Druggable Genome, ES Cell Differentiation/IPS, Protein Kinase, Secreted Protein, Stem cell relevant signaling - JAK/STAT signaling pathway, Transmembrane   |
| <b>Protein Pathways:</b> | Adherens junction, Bladder cancer, Calcium signaling pathway, Colorectal cancer, Cytokine-cytokine receptor interaction, Dorso-ventral axis formation, Endocytosis, Endometrial cancer, Epithelial cell signaling in Helicobacter pylori infection, ErbB signaling pathway, Focal adhesion, Gap junction, Glioma, GnRH signaling pathway, MAPK signaling pathway, Melanoma, Non-small cell lung cancer, Pancreatic cancer, Pathways in cancer, Prostate cancer, Regulation of actin cytoskeleton |

## Product images:



Western blot analysis of EGFR phosphorylation expression in A431 whole cell lysates, The lane on the left is treated with the antigen-specific peptide.