

Product datasheet for **TA325425**

Ephrin B2 (EFNB2) Rabbit Polyclonal Antibody

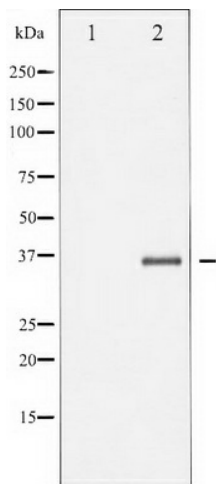
Product data:

Product Type:	Primary Antibodies
Applications:	WB
Recommended Dilution:	WB: 1:500-1:2000
Reactivity:	Human, Mouse, Rat
Modifications:	Phospho-specific
Host:	Rabbit
Isotype:	IgG
Clonality:	Polyclonal
Immunogen:	The antiserum was produced against A synthesized peptide derived from human EFNB1/2 around the phosphorylation site of Tyrosine 330
Formulation:	Rabbit IgG in phosphate buffered saline , pH 7.4, 150mM NaCl, 0.02% sodium azide and 50% glycerol.
Concentration:	lot specific
Purification:	The antibody was affinity-purified from rabbit antiserum by affinity-chromatography using epitope-specific peptide.
Conjugation:	Unconjugated
Storage:	Store at -20°C as received.
Stability:	Stable for 12 months from date of receipt.
Predicted Protein Size:	37 kDa
Gene Name:	ephrin B2
Database Link:	NP_004084 Entrez Gene 13642 MouseEntrez Gene 306636 RatEntrez Gene 1948 Human P52799
Background:	This gene encodes a member of the ephrin (EPH) family. The ephrins and EPH-related receptors comprise the largest subfamily of receptor protein-tyrosine kinases and have been implicated in mediating developmental events, especially in the nervous system and in erythropoiesis.



[View online »](#)

Synonyms: EPLG5; Htk-L; HTKL; LERK5
Protein Families: Druggable Genome, Transmembrane
Protein Pathways: Axon guidance

Product images:

Western blot analysis of EFNB1/2 phosphorylation expression in TNF-a treated 293 whole cell lysates, The lane on the left is treated with the antigen-specific peptide.