

## Product datasheet for **TA325424**

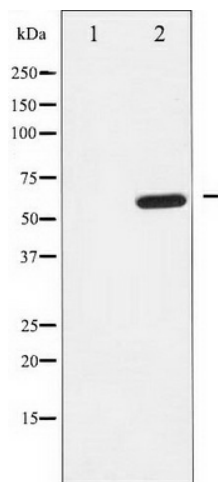
### Ephrin B1 (EFNB1) Rabbit Polyclonal Antibody

#### Product data:

Product Type:	Primary Antibodies
Applications:	WB
Recommended Dilution:	WB: 1:500-1:2000; IHC: 1:50-1:200
Reactivity:	Human, Mouse, Rat
Host:	Rabbit
Isotype:	IgG
Clonality:	Polyclonal
Immunogen:	The antiserum was produced against A synthesized peptide derived from human EFNB1/2
Formulation:	Rabbit IgG in phosphate buffered saline , pH 7.4, 150mM NaCl, 0.02% sodium azide and 50% glycerol.
Concentration:	lot specific
Purification:	The antibody was affinity-purified from rabbit antiserum by affinity-chromatography using epitope-specific peptide.
Conjugation:	Unconjugated
Storage:	Store at -20°C as received.
Stability:	Stable for 12 months from date of receipt.
Predicted Protein Size:	59 kDa
Gene Name:	ephrin B1
Database Link:	<a href="#">NP_004420</a> <a href="#">Entrez Gene 13641 Mouse</a> <a href="#">Entrez Gene 25186 Rat</a> <a href="#">Entrez Gene 1947 Human</a> <a href="#">P98172</a>
Background:	This gene encodes a member of the ephrin family. The encoded protein is a type I membrane protein and a ligand of Eph-related receptor tyrosine kinases. It may play a role in cell adhesion and function in the development or maintenance of the nervous system.
Synonyms:	CFND; CFNS; EFB1; EFL3; Elk-L; EPLG2; LERK2
Protein Families:	Druggable Genome, Transmembrane
Protein Pathways:	Axon guidance



[View online »](#)

**Product images:**

Western blot analysis of EFNB1/2 expression in EGF treated 293 whole cell lysates, The lane on the left is treated with the antigen-specific peptide.