

## Product datasheet for **TA325421**

### DUSP1 Rabbit Polyclonal Antibody

#### Product data:

Product Type:	Primary Antibodies
Applications:	WB
Recommended Dilution:	WB: 1:500-1:2000; IHC: 1:50-1:200
Reactivity:	Human, Mouse, Rat
Modifications:	Phospho-specific
Host:	Rabbit
Isotype:	IgG
Clonality:	Polyclonal
Immunogen:	The antiserum was produced against A synthesized peptide derived from human MKP-1/2 around the phosphorylation site of Serine 296/318
Formulation:	Rabbit IgG in phosphate buffered saline , pH 7.4, 150mM NaCl, 0.02% sodium azide and 50% glycerol.
Concentration:	lot specific
Purification:	The antibody was affinity-purified from rabbit antiserum by affinity-chromatography using epitope-specific peptide.
Conjugation:	Unconjugated
Storage:	Store at -20°C as received.
Stability:	Stable for 12 months from date of receipt.
Predicted Protein Size:	45 kDa
Gene Name:	dual specificity phosphatase 1
Database Link:	<a href="#">NP_004408</a> <a href="#">Entrez Gene 19252 MouseEntrez Gene 114856 RatEntrez Gene 1843 Human P28562</a>
Background:	The expression of DUSP1 gene is induced in human skin fibroblasts by oxidative/heat stress and growth factors. It specifies a protein with structural features similar to members of the non-receptor-type protein-tyrosine phosphatase family, and which has significant amino-acid sequence similarity to a Tyr/Ser-protein phosphatase encoded by the late gene H1 of vaccinia virus.



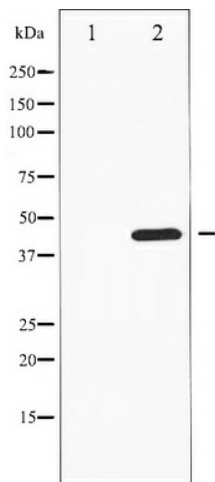
[View online »](#)

**Synonyms:** CL100; HVH1; MKP-1; MKP1; PTPN10

**Protein Families:** Druggable Genome, Phosphatase

**Protein Pathways:** MAPK signaling pathway

**Product images:**



Western blot analysis of MKP-1/2 phosphorylation expression in heatshockK562 whole cell lysates, The lane on the left is treated with the antigen-specific peptide.

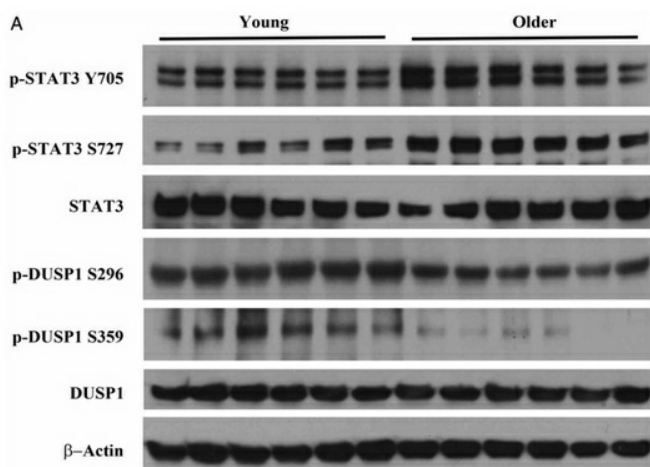


Figure from citation: Western blot analysis of DUSP1 protein level by using anti-DUSP1 antibody in monocytes isolated by negative magnetic bead sorting from young (n = 6) and older (n = 6) subjects at baseline. [View Citation](#)