

## Product datasheet for **TA325411**

### Dynamin 1 (DNM1) Rabbit Polyclonal Antibody

#### Product data:

Product Type:	Primary Antibodies
Applications:	WB
Recommended Dilution:	WB: 1:500-1:2000; IHC: 1:50-1:200
Reactivity:	Human, Mouse, Rat
Modifications:	Phospho-specific
Host:	Rabbit
Isotype:	IgG
Clonality:	Polyclonal
Immunogen:	The antiserum was produced against A synthesized peptide derived from human Dynamin-1 around the phosphorylation site of Serine 774
Formulation:	Rabbit IgG in phosphate buffered saline , pH 7.4, 150mM NaCl, 0.02% sodium azide and 50% glycerol.
Concentration:	lot specific
Purification:	The antibody was affinity-purified from rabbit antiserum by affinity-chromatography using epitope-specific peptide.
Conjugation:	Unconjugated
Storage:	Store at -20°C as received.
Stability:	Stable for 12 months from date of receipt.
Predicted Protein Size:	97 kDa
Gene Name:	dynamin 1
Database Link:	<a href="#">NP_001005336</a> <a href="#">Entrez Gene 13429 MouseEntrez Gene 140694 RatEntrez Gene 1759 Human Q05193</a>
Background:	Dynamins represent one of the subfamilies of GTP-binding proteins. These proteins share considerable sequence similarity over the N-terminal portion of the molecule, which contains the GTPase domain.
Synonyms:	DNM

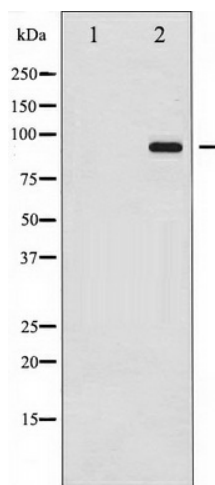


[View online »](#)

Protein Families: Druggable Genome

Protein Pathways: Endocytosis, Fc gamma R-mediated phagocytosis

### Product images:



Western blot analysis of Dynamin-1 phosphorylation expression in Mouse brain tissue lysates, The lane on the left is treated with the antigen-specific peptide.