

Product datasheet for **TA325407**

DAB1 Rabbit Polyclonal Antibody

Product data:

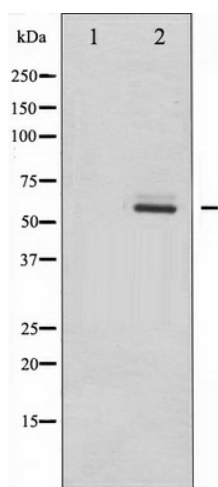
Product Type:	Primary Antibodies
Applications:	WB
Recommended Dilution:	WB: 1:500-1:2000
Reactivity:	Human, Mouse, Rat
Modifications:	Phospho-specific
Host:	Rabbit
Isotype:	IgG
Clonality:	Polyclonal
Immunogen:	The antiserum was produced against A synthesized peptide derived from human Dab1 around the phosphorylation site of Tyrosine 232
Formulation:	Rabbit IgG in phosphate buffered saline , pH 7.4, 150mM NaCl, 0.02% sodium azide and 50% glycerol.
Concentration:	lot specific
Purification:	The antibody was affinity-purified from rabbit antiserum by affinity-chromatography using epitope-specific peptide.
Conjugation:	Unconjugated
Storage:	Store at -20°C as received.
Stability:	Stable for 12 months from date of receipt.
Predicted Protein Size:	60 kDa
Gene Name:	DAB1, reelin adaptor protein
Database Link:	NP_066566 Entrez Gene 13131 MouseEntrez Gene 266729 RatEntrez Gene 1600 Human O75553
Background:	DAB1 an adaptor molecule functioning in neural development. The laminar organization of multiple neuronal types in the cerebral cortex is required for normal cognitive function. In mice, the disabled-1 gene plays a central role in brain development, directing the migration of cortical neurons past previously formed neurons to reach their proper layer.



[View online »](#)

Synonyms: disabled homolog 1; disabled homolog 1 (Drosophila); OTTHUMP00000010045; OTTHUMP00000011753

Product images:



Western blot analysis of Dab1 phosphorylation expression in LOVO whole cell lysates, The lane on the left is treated with the antigen-specific peptide.