

## Product datasheet for **TA325405**

### Cytochrome C (CYCS) Rabbit Polyclonal Antibody

#### Product data:

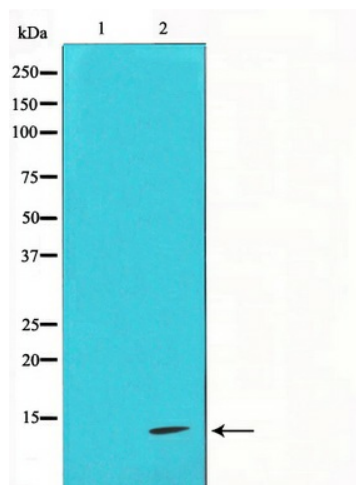
Product Type:	Primary Antibodies
Applications:	IHC, WB
Recommended Dilution:	WB: 1:500-1:2000; IHC: 1:50-1:200
Reactivity:	Human, Mouse, Rat
Host:	Rabbit
Isotype:	IgG
Clonality:	Polyclonal
Immunogen:	The antiserum was produced against a synthesized A synthesized peptide derived from human Cytochrome c.
Formulation:	Rabbit IgG in phosphate buffered saline , pH 7.4, 150mM NaCl, 0.02% sodium azide and 50% glycerol.
Concentration:	lot specific
Purification:	The antibody was affinity-purified from rabbit antiserum by affinity-chromatography using epitope-specific peptide.
Conjugation:	Unconjugated
Storage:	Store at -20°C as received.
Stability:	Stable for 12 months from date of receipt.
Gene Name:	cytochrome c, somatic
Database Link:	<a href="#">NP_061820</a> <a href="#">Entrez Gene 13063 MouseEntrez Gene 25309 RatEntrez Gene 54205 Human P99999</a>
Background:	CYCS Electron carrier protein. The oxidized form of the cytochrome c heme group can accept an electron from the heme group of the cytochrome c1 subunit of cytochrome reductase. Cytochrome c then transfers this electron to the cytochrome oxidase complex, the final protein carrier in the mitochondrial electron-transport chain. Belongs to the cytochrome c family.
Synonyms:	CYC; HCS; THC4
Protein Families:	Druggable Genome



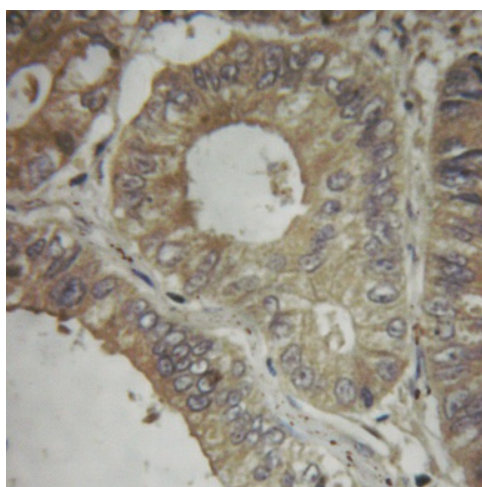
[View online »](#)

**Protein Pathways:**

Alzheimer's disease, Amyotrophic lateral sclerosis (ALS), Apoptosis, Colorectal cancer, Huntington's disease, p53 signaling pathway, Parkinson's disease, Pathways in cancer, Small cell lung cancer, Viral myocarditis

**Product images:**

Western blot analysis on COS7 cell lysate using Cytochrome c Antibody



Immunohistochemical analysis of paraffin-embedded human colon carcinoma tissue using Cytochrome c Antibody.