

Product datasheet for **TA325402**

Cortactin (CTTN) Rabbit Polyclonal Antibody

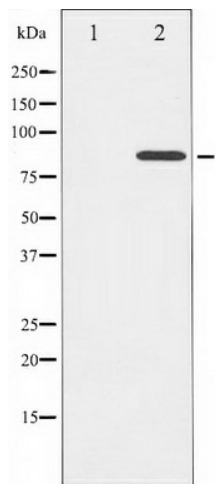
Product data:

Product Type:	Primary Antibodies
Applications:	WB
Recommended Dilution:	WB: 1:500-1:2000; IHC: 1:50-1:200
Reactivity:	Human, Mouse, Rat
Modifications:	Phospho-specific
Host:	Rabbit
Isotype:	IgG
Clonality:	Polyclonal
Immunogen:	The antiserum was produced against A synthesized peptide derived from human Cortactin around the phosphorylation site of Tyrosine 466
Formulation:	Rabbit IgG in phosphate buffered saline , pH 7.4, 150mM NaCl, 0.02% sodium azide and 50% glycerol.
Concentration:	lot specific
Purification:	The antibody was affinity-purified from rabbit antiserum by affinity-chromatography using epitope-specific peptide.
Conjugation:	Unconjugated
Storage:	Store at -20°C as received.
Stability:	Stable for 12 months from date of receipt.
Predicted Protein Size:	85 kDa
Gene Name:	cortactin
Database Link:	NP_001171669 Entrez Gene 13043 MouseEntrez Gene 60465 RatEntrez Gene 2017 Human Q14247
Background:	cortactin a cytoskeletal protein that that is involved in coordinating actin reorganization during cell movement. Localizes at the leading edge of lamellipodia during cell migration. Its amino-terminal acidic domain associates with the Arp2/3 and WASP complex at F-actin branches.



[View online »](#)

Synonyms: EMS1
Protein Families: Druggable Genome
Protein Pathways: Pathogenic Escherichia coli infection, Tight junction

Product images:

Western blot analysis of Cortactin phosphorylation expression in COS7 whole cell lysates, The lane on the left is treated with the antigen-specific peptide.