

Product datasheet for **TA325399**

Cortactin (CTTN) Rabbit Polyclonal Antibody

Product data:

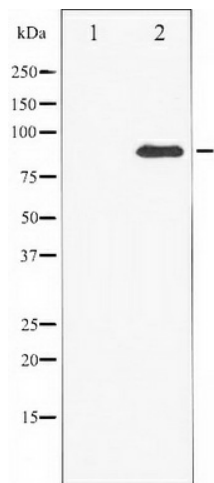
| | |
|-------------------------|--|
| Product Type: | Primary Antibodies |
| Applications: | WB |
| Recommended Dilution: | WB: 1:500-1:2000 |
| Reactivity: | Human, Mouse, Rat |
| Host: | Rabbit |
| Isotype: | IgG |
| Clonality: | Polyclonal |
| Immunogen: | The antiserum was produced against A synthesized peptide derived from human Cortactin |
| Formulation: | Rabbit IgG in phosphate buffered saline , pH 7.4, 150mM NaCl, 0.02% sodium azide and 50% glycerol. |
| Concentration: | lot specific |
| Purification: | The antibody was affinity-purified from rabbit antiserum by affinity-chromatography using epitope-specific peptide. |
| Conjugation: | Unconjugated |
| Storage: | Store at -20°C as received. |
| Stability: | Stable for 12 months from date of receipt. |
| Predicted Protein Size: | 85 kDa |
| Gene Name: | cortactin |
| Database Link: | NP_005222 Entrez Gene 13043 Mouse Entrez Gene 60465 Rat Entrez Gene 2017 Human Q14247 |
| Background: | cortactin a cytoskeletal protein that that is involved in coordinating actin reorganization during cell movement. Localizes at the leading edge of lamellipodia during cell migration. Its amino-terminal acidic domain associates with the Arp2/3 and WASP complex at F-actin branches. |
| Synonyms: | EMS1 |
| Protein Families: | Druggable Genome |



[View online »](#)

Protein Pathways: Pathogenic Escherichia coli infection, Tight junction

Product images:



Western blot analysis of Cortactin expression in H₂O₂ treated HeLa whole cell lysates, The lane on the left is treated with the antigen-specific peptide.