

Product datasheet for **TA325393**

MCSF Receptor (CSF1R) Rabbit Polyclonal Antibody

Product data:

Product Type:	Primary Antibodies
Applications:	WB
Recommended Dilution:	WB: 1:500-1:2000
Reactivity:	Human, Mouse, Rat
Modifications:	Phospho-specific
Host:	Rabbit
Isotype:	IgG
Clonality:	Polyclonal
Immunogen:	The antiserum was produced against A synthesized peptide derived from human M-CSF Receptor around the phosphorylation site of Tyrosine 809
Formulation:	Rabbit IgG in phosphate buffered saline , pH 7.4, 150mM NaCl, 0.02% sodium azide and 50% glycerol.
Concentration:	lot specific
Purification:	The antibody was affinity-purified from rabbit antiserum by affinity-chromatography using epitope-specific peptide.
Conjugation:	Unconjugated
Storage:	Store at -20°C as received.
Stability:	Stable for 12 months from date of receipt.
Predicted Protein Size:	108 kDa
Gene Name:	colony stimulating factor 1 receptor
Database Link:	NP_005202 Entrez Gene 12978 MouseEntrez Gene 307403 RatEntrez Gene 1436 Human P07333
Background:	This protein tyrosine kinase transmembrane receptor is the receptor for colony stimulating factor 1, a cytokine which controls the production, differentiation, and function of macrophages. This receptor mediates most if not all of the biological effects of this cytokine.
Synonyms:	C-FMS; CD115; CSF-1R; CSFR; FIM2; FMS; HDLS; M-CSF-R

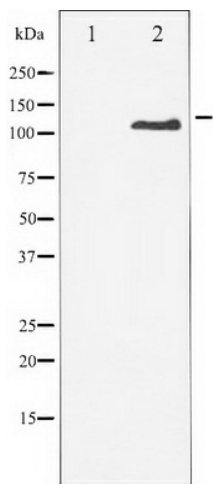


[View online »](#)

Protein Families: Druggable Genome, Protein Kinase, Transmembrane

Protein Pathways: Cytokine-cytokine receptor interaction, Endocytosis, Hematopoietic cell lineage, Pathways in cancer

Product images:



Western blot analysis of M-CSF Receptor phosphorylation expression in LPS treated 293 whole cell lysates, The lane on the left is treated with the antigen-specific peptide.