

## Product datasheet for **TA325391**

### p38 (CRK) Rabbit Polyclonal Antibody

#### Product data:

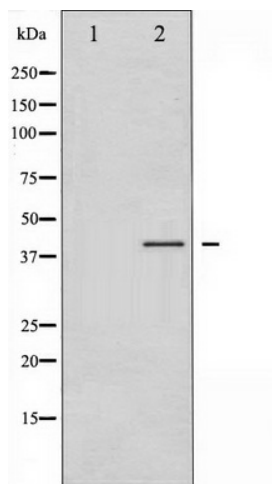
Product Type:	Primary Antibodies
Applications:	WB
Recommended Dilution:	WB: 1:500-1:2000; IF/ICC: 1:100-1:500
Reactivity:	Human, Mouse, Rat
Modifications:	Phospho-specific
Host:	Rabbit
Isotype:	IgG
Clonality:	Polyclonal
Immunogen:	The antiserum was produced against A synthesized peptide derived from human CrkII around the phosphorylation site of Tyrosine 221
Formulation:	Rabbit IgG in phosphate buffered saline , pH 7.4, 150mM NaCl, 0.02% sodium azide and 50% glycerol.
Concentration:	lot specific
Purification:	The antibody was affinity-purified from rabbit antiserum by affinity-chromatography using epitope-specific peptide.
Conjugation:	Unconjugated
Storage:	Store at -20°C as received.
Stability:	Stable for 12 months from date of receipt.
Predicted Protein Size:	42 kDa
Gene Name:	v-crk avian sarcoma virus CT10 oncogene homolog
Database Link:	<a href="#">NP_005197</a> <a href="#">Entrez Gene 12928 MouseEntrez Gene 54245 RatEntrez Gene 1398 Human P46108</a>
Background:	Crk an adaptor protein with an SH2-SH3-SH3 domain structure. Recruits cytoplasmic proteins through SH2-phospho-tyrosine interaction. Phosphorylated by Abl, IGF-IR and EGFR.
Synonyms:	CRKII; p38
Protein Families:	Druggable Genome, Transcription Factors



[View online »](#)

**Protein Pathways:**

Chemokine signaling pathway, Chronic myeloid leukemia, ErbB signaling pathway, Fc gamma R-mediated phagocytosis, Focal adhesion, Insulin signaling pathway, MAPK signaling pathway, Neurotrophin signaling pathway, Pathways in cancer, Regulation of actin cytoskeleton, Renal cell carcinoma

**Product images:**

Western blot analysis of CrkII phosphorylation expression in COS7 whole cell lysates, The lane on the left is treated with the antigen-specific peptide.