

Product datasheet for **TA325389**

CREB1 Rabbit Polyclonal Antibody

Product data:

Product Type:	Primary Antibodies
Applications:	IHC, WB
Recommended Dilution:	WB: 1:500-1:2000; IHC: 1:50-1:200
Reactivity:	Human, Mouse, Rat
Modifications:	Phospho-specific
Host:	Rabbit
Isotype:	IgG
Clonality:	Polyclonal
Immunogen:	The antiserum was produced against a synthesized A synthesized peptide derived from human CREB around the phosphorylation site of Sersine 133.
Formulation:	Rabbit IgG in phosphate buffered saline , pH 7.4, 150mM NaCl, 0.02% sodium azide and 50% glycerol.
Concentration:	lot specific
Purification:	The antibody was affinity-purified from rabbit antiserum by affinity-chromatography using epitope-specific peptide.
Conjugation:	Unconjugated
Storage:	Store at -20°C as received.
Stability:	Stable for 12 months from date of receipt.
Gene Name:	cAMP responsive element binding protein 1
Database Link:	NP_004370 Entrez Gene 12912 Mouse Entrez Gene 81646 Rat Entrez Gene 1385 Human P16220
Background:	This gene encodes a transcription factor that is a member of the leucine zipper family of DNA binding proteins. This protein binds as a homodimer to the cAMP-responsive element, an octameric palindrome. The protein is phosphorylated by several protein kinases, and induces transcription of genes in response to hormonal stimulation of the cAMP pathway. Alternate splicing of this gene results in two transcript variants encoding different isoforms.
Synonyms:	CREB

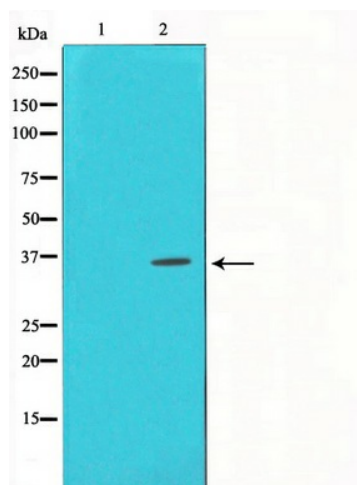


[View online »](#)

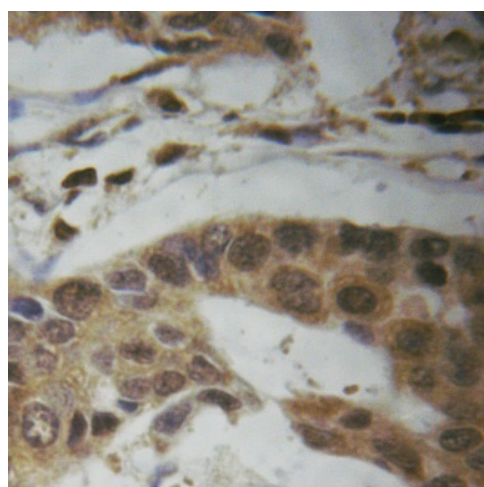
Protein Families: Druggable Genome, Transcription Factors

Protein Pathways: Antigen processing and presentation, Huntington's disease, Melanogenesis, Prostate cancer

Product images:



Western blot analysis on HeLa cell lysate using Phospho-CREB (Ser133) Antibody



Immunohistochemical analysis of paraffin-embedded breast carcinoma tissue using Phospho- CREB (Ser133) Antibody.